

KOMATSU

KPRIME TOOTH SYSTEM

KPRIME
TOOTH SYSTEM



ORIGIN JAPAN / KLTD

Photos of the equipment are referential, may include optional equipment



»Tooth systems are often viewed as interchangeable from one manufacturer to another. This is not the case with Kprime. We have built a truly unique product that is stronger and longer lasting with additional safety-enhancing features. We did this by listening to our customers and spending years figuring out the correct solution to their issues.

»With Kprime we have created a new standard for what GET should do for your business.

APPLICATIONS

- »CONSTRUCTION
- »MINING
- »QUARRY
- »TRENCHING
- »UTILITY

MACHINE TYPES

- »EXCAVATORS
- »WHEEL LOADERS



»SAFETY ENHANCEMENTS

- »Intuitive locking system.
- »Pry slots on tooth and wear cap for easier removal of worn parts.
- »Low torque pin for easy tooth changes.
- »Weights marked on all parts.



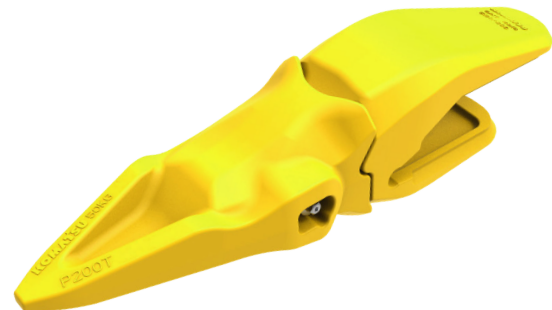
»PRODUCTIVITY

- »10% - 15% increased usable wear material.
- »Improved penetration by up to 15%.
- »Wear indicators on wear cap and fastener.
- »Rotatable tooth for extended life.
- »Wear material added to adapter legs for longer wear life.
- »Designed to stay sharp for the life of the tooth.



»RELIABILITY

- »10% stronger design reduces breakage.
- »Improved pin design prevents unlocking after extended use.
- »Optimized design reduces wear on adapters.
- »Improved stability through tighter fit design of tooth to adapter.

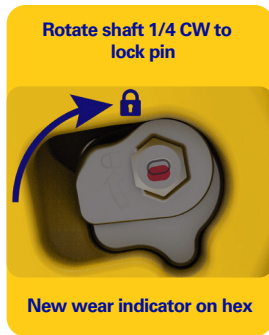


Performance will vary by application and environment. Operating conditions, installation process and maintenance are outside the control of Hensley Industries.

SAFETY ENHANCEMENTS



- »Push out ramp on tooth to help dislodge the fastener when unlocking.
- »Audible “clack” sound indicating when locked.
- »Pin designed for multiple tooth changes.
- »Wear indicator on hex head of pin.
- »Metric socket for locking and unlocking.
- »Simple ¼ rotation to lock/unlock.

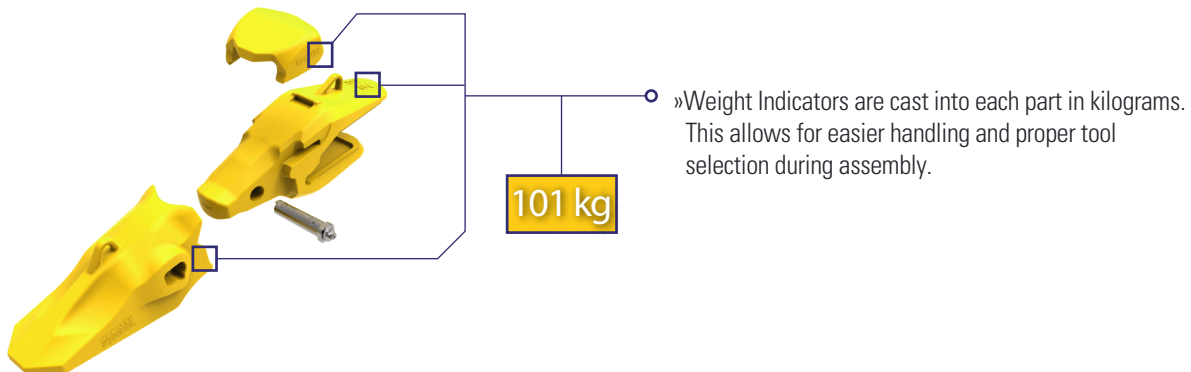
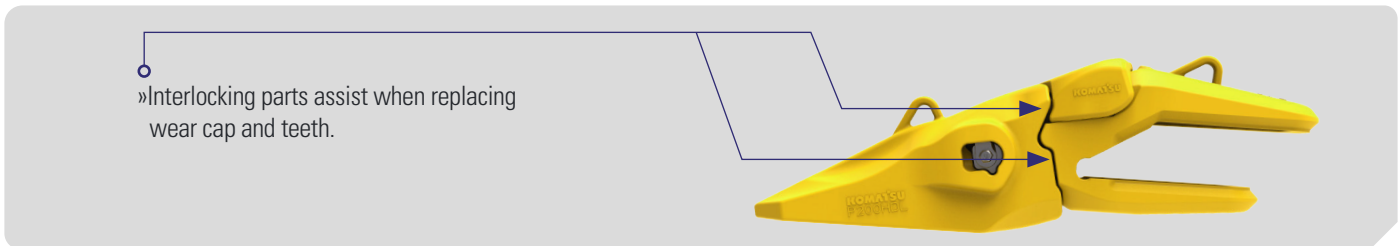
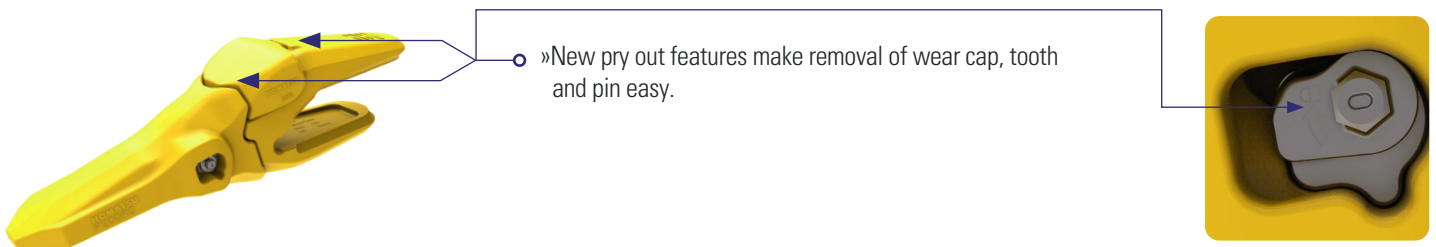


Unlocked

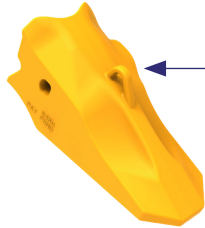


Locked

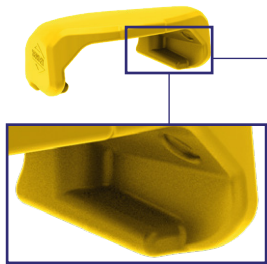
TOOTH SIZE	SOCKET NEEDED
004-005	8 mm
010-015	10 mm
020-030	12 mm
040-050	14 mm
070-085	16 mm
120-400	19 mm



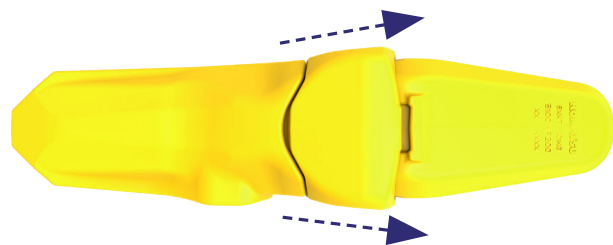
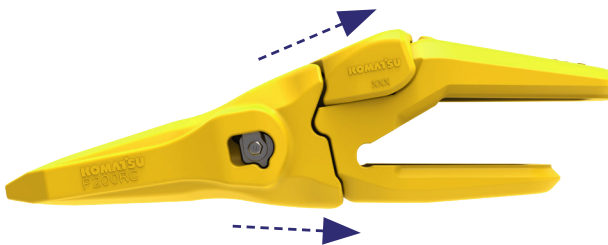
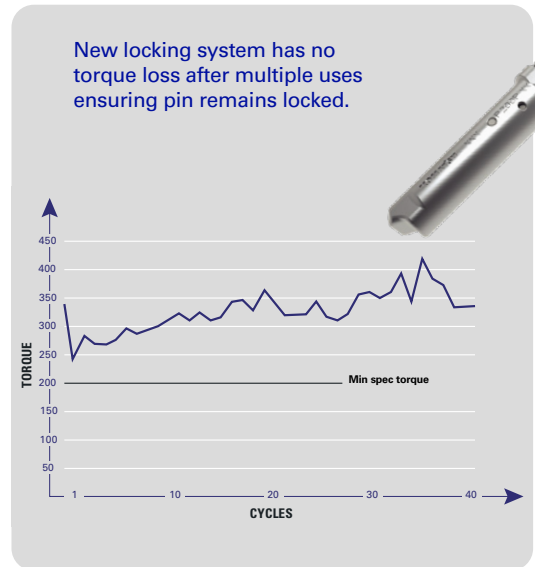
RELIABILITY



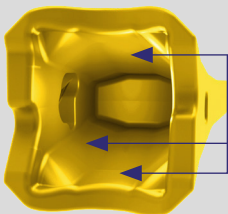
»10% increased strength and less stress tooth design.



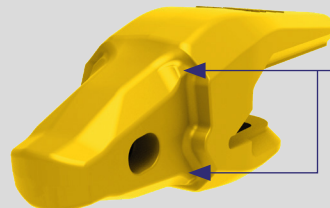
»Redesigned wear cap has interior stabilizing leg up to 50% stronger.



»New tooth and wear cap redesigned to deflect material flow away from the adapter improving the overall assembly wear life.



»Multi and elevated fit surfaces provide better tooth fit.

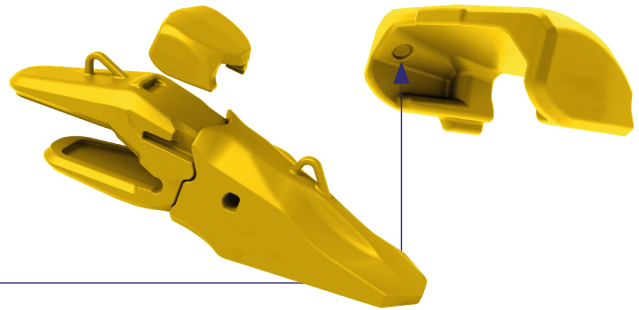


»Twist control reduces load on fastener.

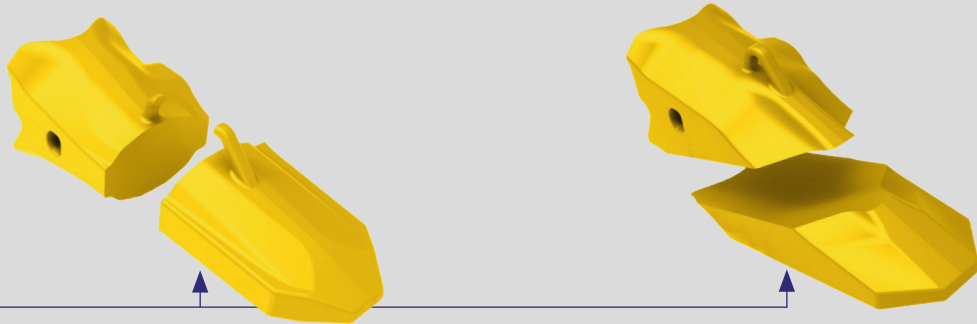
PRODUCTIVITY



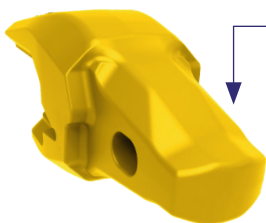
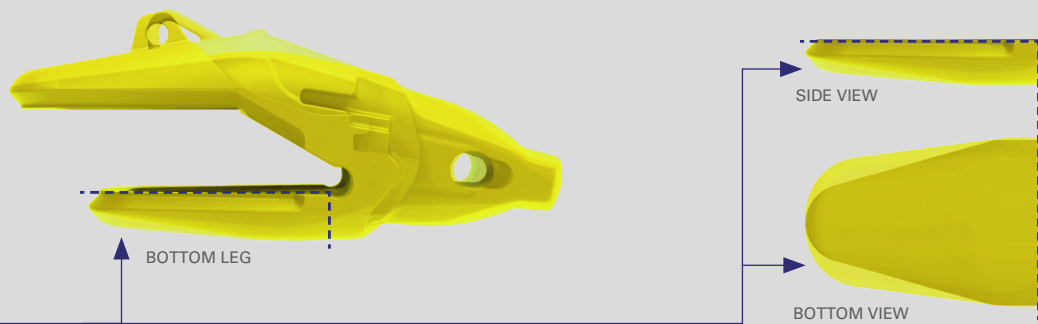
»Wear indicators let you know when to change out parts to maximize efficiency and cost.



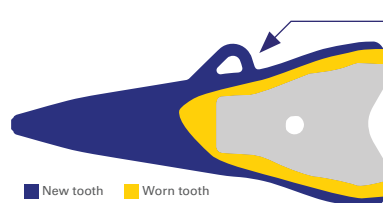
»Wear material increased 10% - 15% in high wear areas.



»Optimized usable wear material in high wear areas.

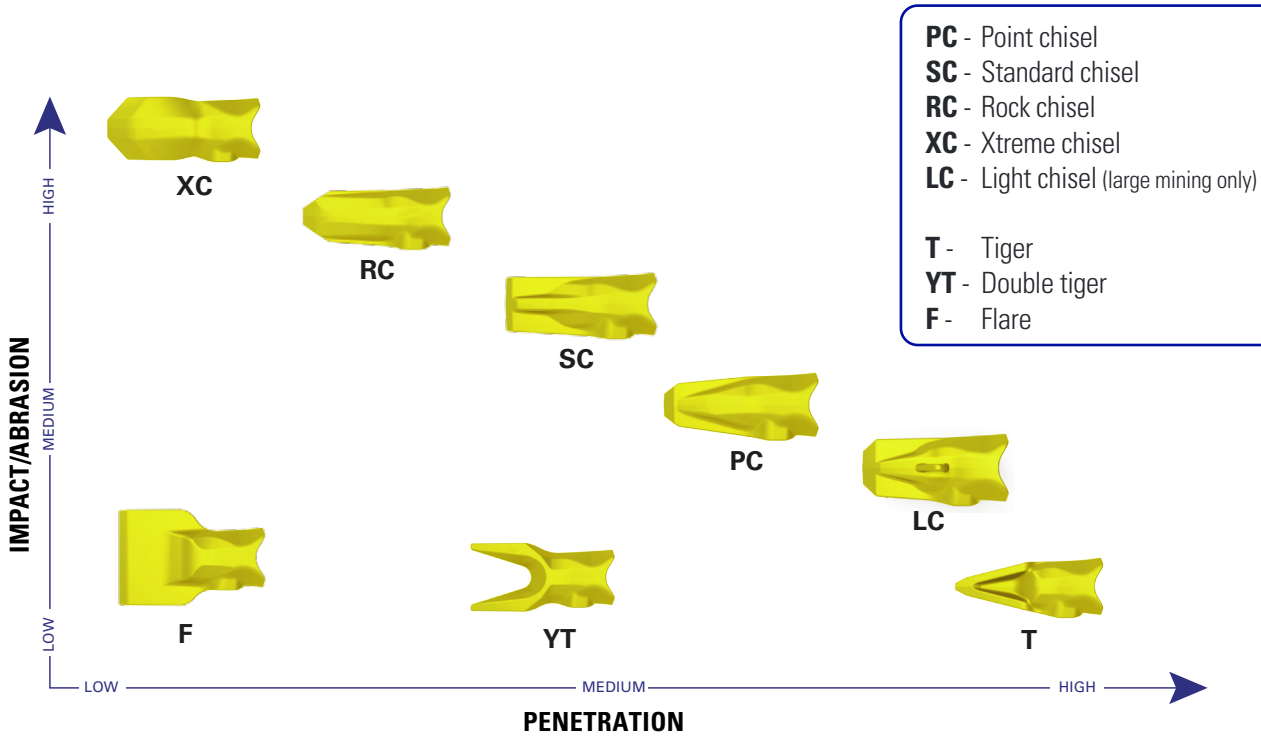


»Symmetrical nose allows for tooth rotation to extend wear life.

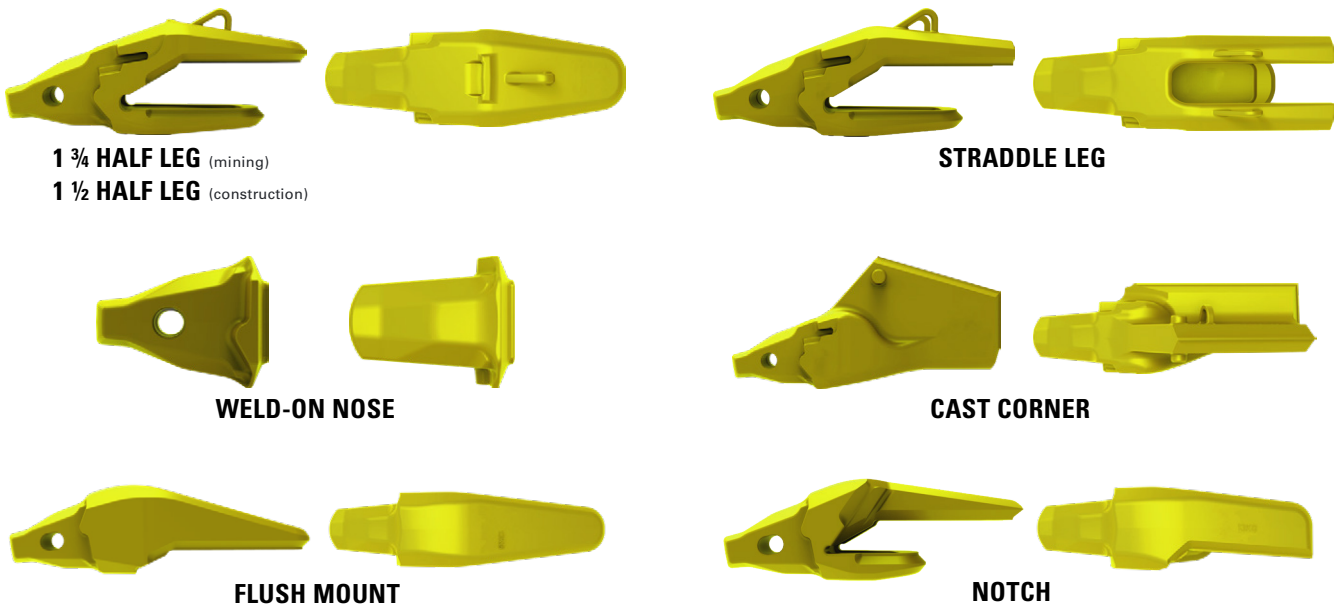


»Designed to stay sharp throughout tooth life.

EXCAVATOR TEETH



EXCAVATOR ADAPTERS



Note: Not all adapter/tooth styles are available for all series.

EXCAVATOR TOOTH SIZES AVAILABLE

Series	Machine class	Part number							
		T	YT	PC	LC	SC	RC	XC	F
P004	004		P004YT			P004SC			
P005	005		P005YT			P005SC			
P010	010		P010YT			P010SC			
P015	015	P015T	P015YT	P015PC		P015SC	P015RC		P015F
P020	020	P020T	P020YT	P020PC		P020SC	P020RC		P020F
P025	025	P025T	P025YT	P025PC		P025SC	P025RC		P025F
P030	030	P030T	P030YT	P030PC		P030SC	P030RC		P030F
P040	040	P040T	P040YT	P040PC		P040SC	P040RC	P040XC	P040F
P050	050	P050T	P050YT	P050PC		P050SC	P050RC	P050XC	P050F
P070	070	P070T	P070YT	P070PC		P070SC	P070RC	P070XC	P070F
P085	085	P085T	P085YT			P085SC	P085RC	P085XC	
P120	120	P120T	P120YT	P120PC		P120SC	P120RC		
P200	200	P200T		P200PC	P200LC		P200RC		
P300	300	P300T		P300PC	P300LC		P300RC	P300XC	
P400	400	P400T		P400PC	P400LC		P400RC		

ADAPTER PART # SELECTOR

»Choose the number from each of the tables below to determine the proper part #.

A | **B** | **C** | **D** | **E**
 5 | 120 | W | P200 | R

A	ADAPTER TYPE
1	CENTER & RH/LH BEVEL 1 ½ LEG
2	CENTER FLUSH
3	CORNER NOTCHED RH/LH
4	CENTER BOTTOM LEG
5	CENTER & RH/LH BEVEL 1 ¾ LEG
6	STRADDLE BEVEL
7	CENTER SQUARE
8	CENTER BOLT-ON/ MECHANICAL
9	STRADDLE SQUARE
10	STRADDLE FLUSH
11	CORNER CLOSED
12	CORNER BOLT-ON RH/LH/MECHANICAL
13	CORNER CAST T
14	CORNER CAST RH/LH

B	LIP THICKNESS MM*
	16
	25
	30
	40
	45
	50
	60
	75
	80
	90
	100
	120
	140

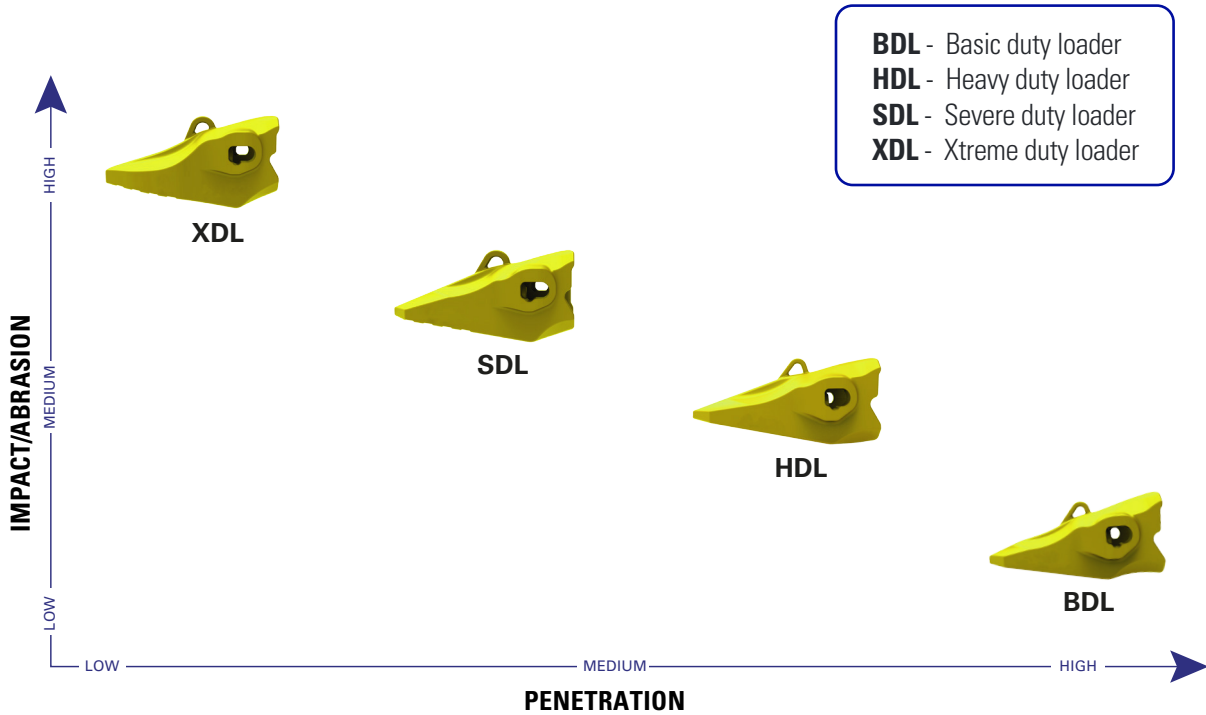
*Additional lip sizes available.

C	WEAR CAP USE
W	WITH WEAR CAP
	NO WEAR CAP

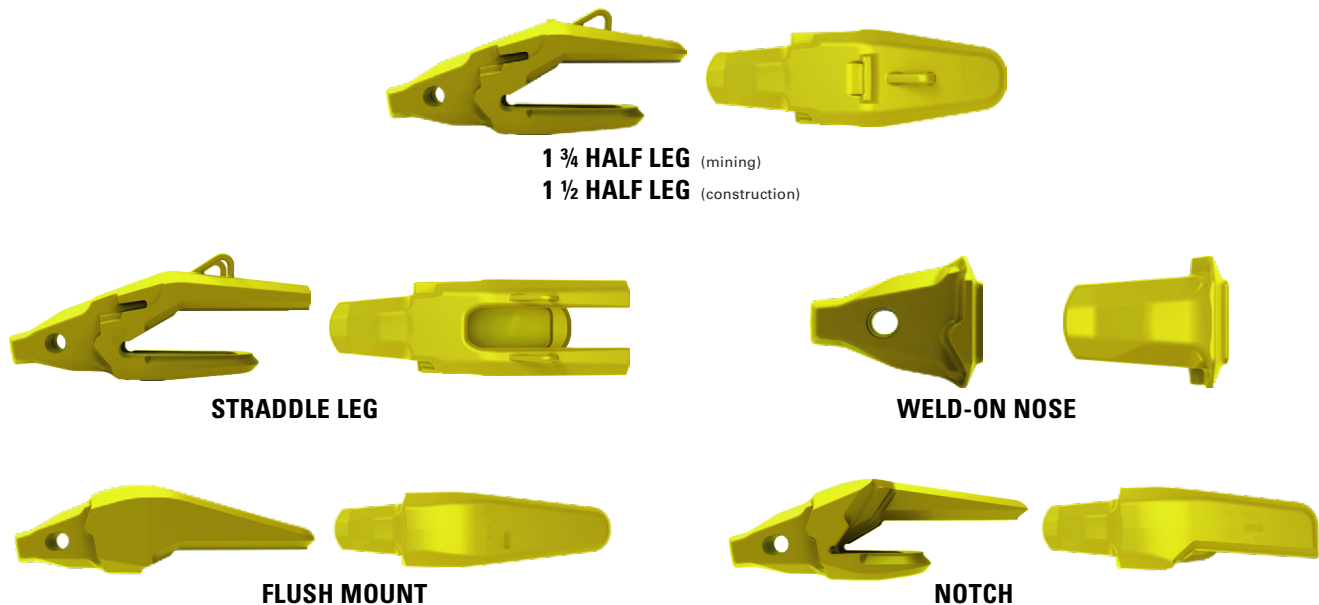
D	SERIES
	P004
	P005
	P010
	P015
	P020
	P025
	P030
	P040
	P050
	P070
	P085
	P120
	P200
	P300
	P400

E	ORIENTATION
R	RIGHT
L	LEFT
CR	CORNER RIGHT
CL	CORNER LEFT

LOADER TEETH



LOADER ADAPTERS



Note: Not all adapter/tooth styles are available for all series.

LOADER TOOTH SIZES AVAILABLE

Series	Machine class	Part number			
		BDL	HDL	SDL	XDL
P010	010		P010HDL		
P015	015	P015BDL	P015HDL	P015SDL	
P020	020	P020BDL	P020HDL	P020SDL	
P025	025	P025BDL	P025HDL	P025SDL	
P030	030	P030BDL	P030HDL	P030SDL	
P040	040	P040BDL	P040HDL	P040SDL	P040XDL
P050	050		P050HDL	P050SDL	P050XDL
P070	070		P070HDL	P070SDL	P070XDL
P085	085	P085BDL	P085HDL	P085SDL	P085XDL
P120	120		P120HDL	P120SDL	P120XDL
P200	200	P200BDL	P200HDL	P200SDL	P200XDL



ADAPTER PART # SELECTOR

»Choose the number from each of the tables below to determine the proper part #.

A	B	C	D	E
5	120	W	P200	R

A	ADAPTER TYPE
1	CENTER & RH/LH BEVEL 1 ½ LEG
2	CENTER FLUSH
3	CORNER NOTCHED RH/LH
4	CENTER BOTTOM LEG
5	CENTER & RH/LH BEVEL 1 ¾ LEG
6	STRADDLE BEVEL
7	CENTER SQUARE
8	CENTER BOLT-ON/ MECHANICAL
9	STRADDLE SQUARE
10	STRADDLE FLUSH
11	CORNER CLOSED
12	CORNER BOLT-ON RH/LH/MECHANICAL
13	CORNER CAST T
14	CORNER CAST RH/LH

B	LIP THICKNESS MM*
	16
	25
	30
	40
	45
	50
	60
	75
	80
	90
	100
	120
	140

*Additional lip sizes available.

C	WEAR CAP USE
W	WITH WEAR CAP
	NO WEAR CAP

D	SERIES
	P004
	P005
	P010
	P015
	P020
	P025
	P030
	P040
	P050
	P070
	P085
	P120
	P200
	P300
	P400

E	ORIENTATION
R	RIGHT
L	LEFT
CR	CORNER RIGHT
CL	CORNER LEFT



»Since 1947, Hensley Industries, Inc. has dedicated itself to providing superior products and service across the globe.

»Hensley's continuous commitment to safety, quality, reliability and our customers enables us to help those in the field every day.

HENSLEY INDUSTRIES, INC.

2108 Joe Field Road Dallas, Texas 75229 USA.

CUSTOMER SERVICE

USA/Canada (888) 406-6262

International +1 (972) 406-6262.

www.HENSLEYIND.com

Product designs, specifications and/or data in this document are provided for informational purposes only and are not warranties of any kind. Product designs and/or specifications may be changed at any time without notice. The only warranties that apply to sales of products and services are standard written warranties, which will be furnished upon request.

Komatsu, and related logo are trademarks of Komatsu Ltd. or one of its affiliates.

© Komatsu Ltd. or one of its affiliates. All rights reserved.

The Komatsu logo is displayed in a bold, blue, sans-serif font. The letters are thick and closely spaced, with a distinctive shape for the 'K' and 'S'.

For further information, contact your Distributor or visit our website www.komatsulatioamerica.com

KLAT-EQ062/01-2020

