

KOMATSU

X-53i

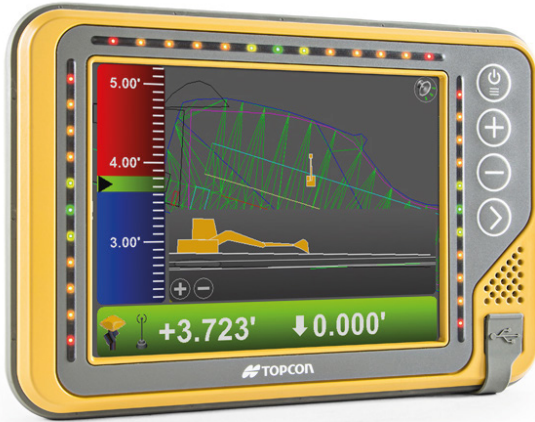
3D INDICATE
CONTROL FOR
EXCAVATORS

 TOPCON



Photos of the equipment are referential, may include optional equipment

3D indicate control excavator system



- Cut grade fast and accurately.
- Cut flat, vertical and 3D surfaces.
- Fully upgradeable.
- Improves job safety.
- Lightbar grade guidance and built-in audible alarms.

»Track every movement

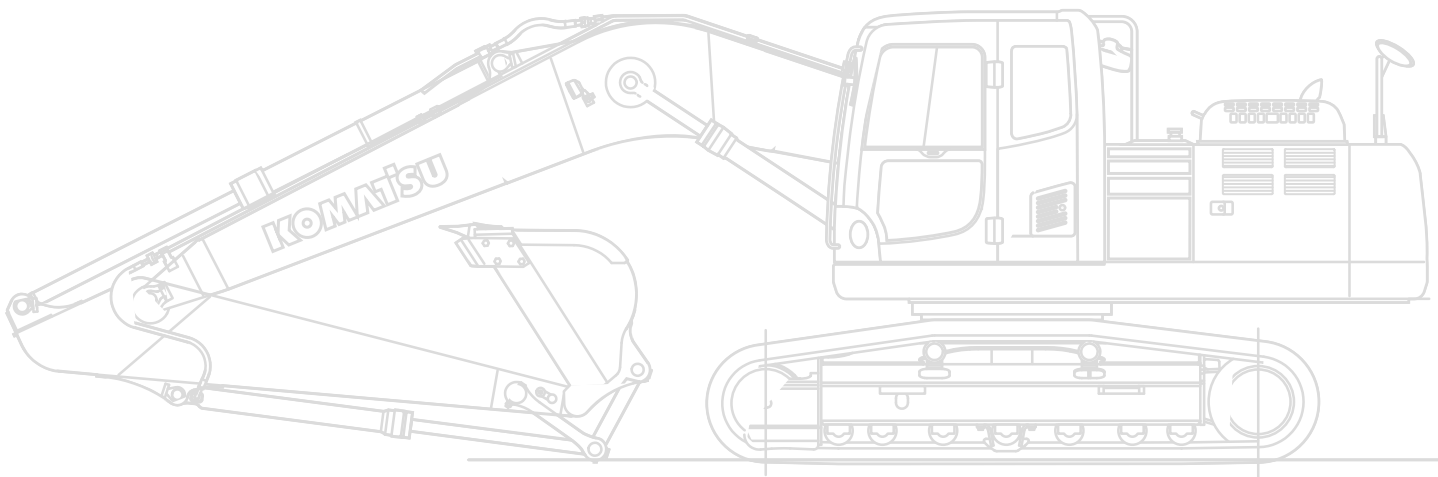
»This trim 3D excavator system provides modern tools when excavating complex slopes or even while working “in the blind.” Bucket movement is tracked in real time, delivering key information to reach grade repeatedly.

»Software driven

»The purpose-built X-53i system allows you to work independently: the software quickly directs you to centerlines and guides your bucket to grade. Keep your schedule on track and streamline tasks.

»Armed with intelligence

»With integrated GNSS technology, a bright and clear touchscreen control box; and innovative tilt sensors, the X-53i system saves time, facilitates common tasks and movements while improving safety daily. Eliminate over- excavation while reaching the target grade with precision.



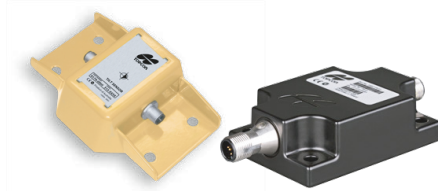
»MC-i4

»Mounted inside the machine to prevent damage, this versatile GNSS receiver allows for multiple communication options.



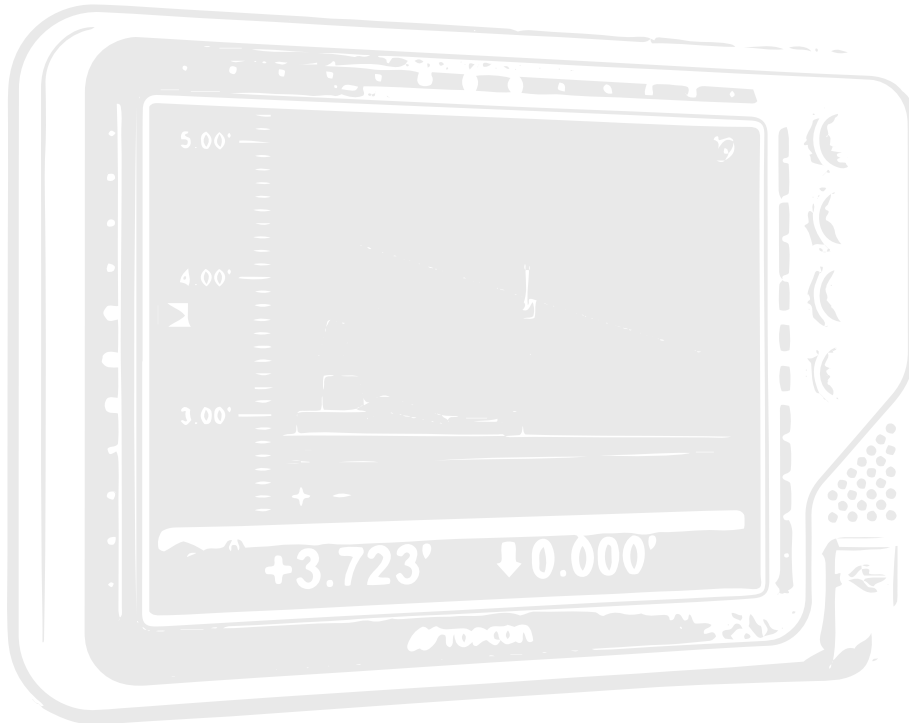
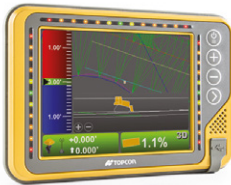
»TS-1/TS-i3

»Tilt sensors are mounted along the bucket, stick, boom, and body for complete bucket control at any angle.



»Graphical user interface

- Windows CE®.
- Touch screen interface.
- Internal battery provides functionality away from the machine.
- Integrated LED lightbar.



GX-55 specifications

Supply voltage	9 to 32 VDC
Ports	2x USB Ethernet RS-232 2x CANBus 2x digital inputs
Display panel	640 x 480 color VGA, enhanced brightness with analog touchscreen
Operating system	Windows® CE
Operating temp	-40°C to 70°C
Weight	1.26 kg with backpack 1 kg without backpack

MC-i4 specifications

Supply voltage	9 to 32 VDC
GNSS	Single or dual
Ports	RS232 RS232/RS485 10/100 Ethernet CAN J1939 CAN J1939/CANOPEN
Connectors	Deutsch DTM06 12 pin (power, ground, serial) Deutsch DTM06 12 pin (Ethernet and CAN) RP-TNC (cellular radio) RP TNC (LPS, or WiFi, or UHF radio (optional)) 2x TNC for GNSS (optional)
Shock	25 g, 11 ms, any axis
Weight	1 kg
Dust/water rating	IP67

TS-1 Specifications

Supply voltage	10 to 30 VDC
Resolution	0.1°
Protocol	CAN-open
Sensor	Solid state, 3-axis, 360°
Housing	Powder-coated aluminum
Dust/water rating	IP67

Product designs, specifications and/or data in this document are provided for informational purposes only and are not warranties of any kind. Product designs and/or specifications may be changed at any time without notice. The only warranties that apply to sales of products and services are standard written warranties, which will be furnished upon request.

Komatsu, and related logo are trademarks of Komatsu Ltd. or one of its affiliates.

© Komatsu Ltd. or one of its affiliates. All rights reserved.

KOMATSU

For further information, contact your Distributor or visit our website www.komatsulatioamerica.com

KLAT-AM014/001-2020

