

KOMATSU

PC950-11R



Photos may include optional equipment.

Hydraulic excavator

Engine power
405 kW / 543 hp @1,800 min⁻¹

Operating weight
PC950-11R: 93,900 kg - 97,100 kg

Bucket capacity
4.0 m³ - 6.0 m³

PC950-11R

Productivity
(P+ mode)

48% up



Fuel efficiency
(P+ mode)

42% up



*Compared with PC850-8E0 (P mode)



Significantly higher productivity

Powerful workability and fuel economy

- Significantly improved productivity **Upgrade**
- Three selectable work modes for high productivity or fuel efficiency **New**
- High power SAA6D140E-7 engine **New**
- Larger cooling core for improved cooling performance **Upgrade**
- New hydraulic system **New**

Improved durability

- Boom and arm resist bending and torsion **Upgrade**
- Clogging sensor for the hydraulic oil filter **New**

Further enhanced safety

- Lock lever auto lock function **New**
- Tie-offs **New**
- Engine shutdown secondary switch **New**
- LED light as standard equipment **New**

ICT

- Large high resolution Liquid Crystal Display (LCD) monitor **New**
- KomVision as a standard feature **New**

Maintenance

- Walk-through catwalks **New**
- Easy-to-retrieve electric grease gun
- Easier cleaning of the oil cooler, air-conditioner condenser, and fuel cooler **New**
- Sealed engine cooling system **New**
- Long-life filter **Upgrade**



Engine power

405 kW / 543 hp @1,800 min⁻¹

Operating weight

93,900 kg - 97,100 kg

Bucket capacity

4.0 m³ - 6.0 m³

Powerful workability and fuel economy

Abundant number of work modes and settings that can be selected to suit the task and purpose

- Significantly improved productivity **Upgrade**

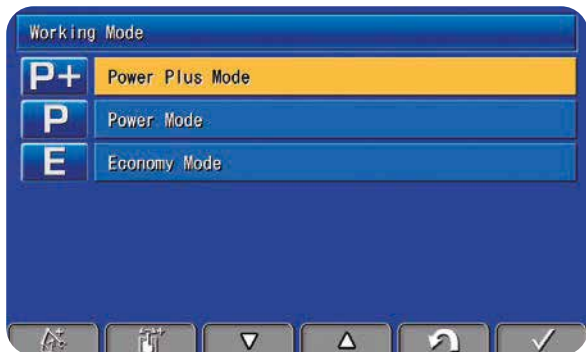
The boosted engine output, greater bucket capacity, and new P+ mode for large productivity have resulted in a significantly higher productivity. The electronically controlled closed loop swing circuit system has also improved multiple operability.

Productivity	VS. PC850-8E0 P mode
In P+ mode for HD spec.	48% up
In P+ mode for SE spec.	64% up

Standard bucket capacity	
HD spec.	4.0 m³
SE spec.	6.0 m³

- Three selectable work modes for high productivity or fuel efficiency **New**

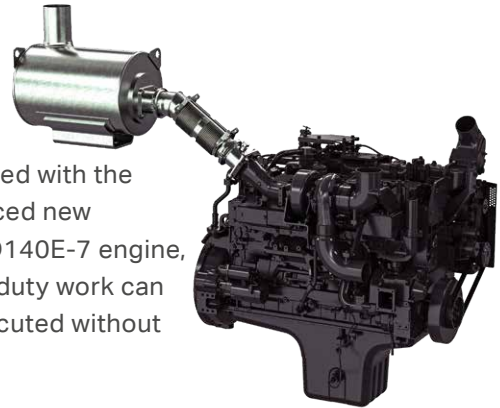
In addition to the conventional P mode and E mode, the newly added P+ mode allows the selection of three work modes with just one touch of the monitor switch.



Fuel efficiency	VS. PC850-8E0 P mode
In P+ mode for HD spec.	42% up
In P+ mode for SE spec.	54% up

Its powerful and smooth operation increases work efficiency

- High power SAA6D140E-7 engine **New**



Equipped with the enhanced new SAA6D140E-7 engine, heavy duty work can be executed without stress.

Engine horsepower (Net)	VS. PC850-8E0
363 kW → 401 kW	10% up

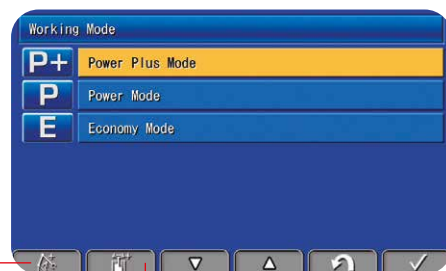
- Large digging force

The high-output engine and high-efficiency hydraulic system enable powerful digging.

Maximum arm crowd force	(ISO 6015)
310 kN (31,600 kgf)	
Maximum bucket digging force	(ISO 6015)
403 kN (41,100 kgf)	

- Boom rise priority mode & swing priority mode

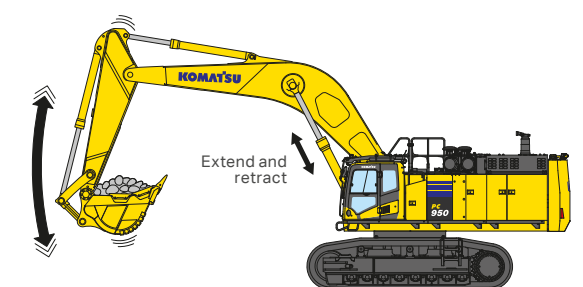
With the monitor switch, you can select the priority order of boom raising and turning operations. So you can adjust the operation balance to best suit the loading work conditions.



Boom rise priority mode — Swing priority mode

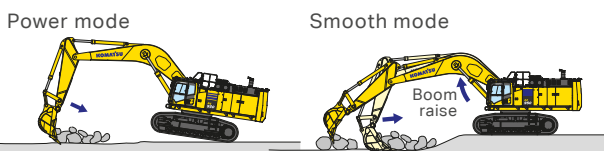
Shockless boom control

The PC950-11R boom circuit features a shockless valve to automatically reduce the amount of shaking when operating the boom. Operator fatigue is reduced (which can improve safety and productivity), and spillage caused by shaking is minimized.



Two-mode setting for boom

Smooth mode provides easy operation for gathering blasted rock and scraping operations. When maximum digging force is needed, switch to Power mode for more effective excavating.



Ensures both productivity performance and fuel efficiency Upgrade

In P mode, the productivity can be increased while maintaining the same fuel consumption as that of conventional machines. While in E mode, the machine can operate with a greater productivity but lower fuel consumption than conventional machines.

In P mode (Compared with PC850-8E0 P mode)	
Productivity	39% up
Fuel consumption	2% down
In E mode (Compared with PC850-8E0 P mode)	
Productivity	25% up
Fuel consumption	12% down

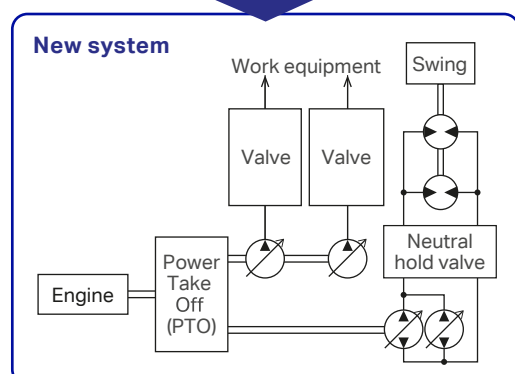
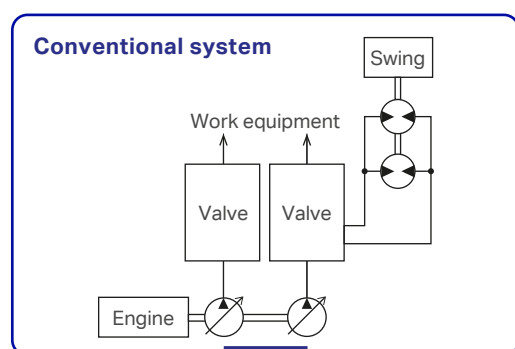
Improved cooling performance Upgrade

The layout of the cooling core has been optimized, and the core has been enlarged. The cooling performance has also been improved by adopting a new shroud shape.



New hydraulic system New

An electronically controlled closed loop swing circuit system has been adopted. Independent control of the swing and work equipment circuits enables finely tuned loading operations, thus contributing to reduced fuel consumption and improved workability.

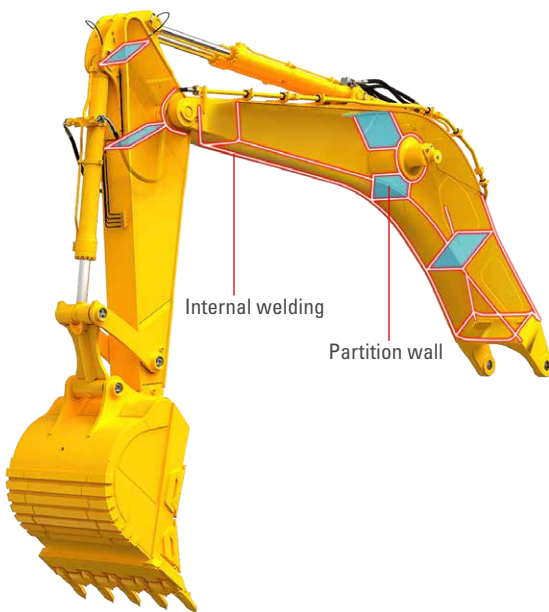


Improved durability

Strengthened boom and arm

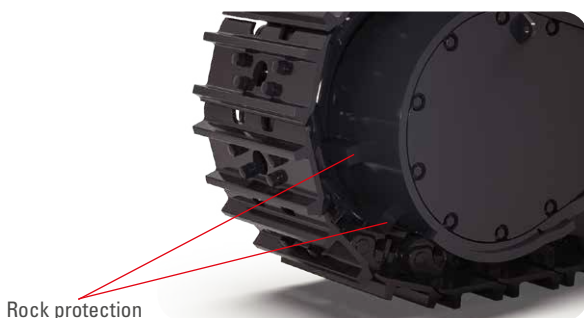
- Boom and arm resist bending and torsion (HD spec.) **Upgrade**

The large cross-sectional structure uses high-tensile steel, thick plates, and partition wall to provide a tough design that resists bending and torsion. Partition wall and internal welding have been added at high load points on the boom, and the welding shape of the arm bosses has been optimized to extend its service life. This hydraulic excavator retains high durability and reliability over the long term, even in hard quarrying operations.



- Reinforced undercarriage

The undercarriage is strengthened to provide excellent reliability and durability when working on rocky ground and blasted rock, etc. Rock protection shield the travel motors and pipings against damage from rocks.



- Cooling core reinforcement

An exceptionally reliable cooling core with a proven track record in mining equipment is used. The durability of the core has been improved to extend its service life.

Trouble-resistant electrical circuits

The electrical circuitry is equipped with shielded connectors that resist sagging and poor connections that may result from vibration, as well as waterproof seals that prevent water and dust from entering the connectors. In addition, a circuit breaker is provided to prevent electrical fires caused by short circuits. In the event of a fire, the hydraulic excavator can be restarted by resetting the circuit breaker switch. In addition, highly reliable heat-resistant covered wires are used around high-temperature parts, such as the engine, and in other important locations.

High-pressure in-line filtration

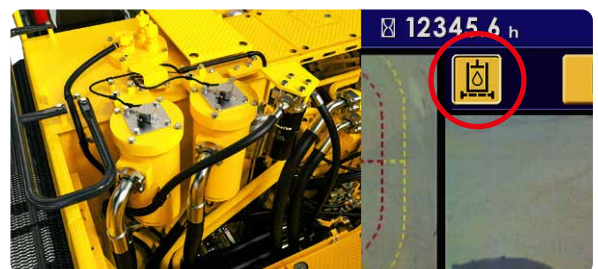
The PC950-11R has the most extensive filtration system available, providing inline filters as standard equipment.

An in-line filter in the outlet port of each main hydraulic pump reduces failures caused by contamination.

- Return oil filter clog detection function **New**

Recommends filter exchange and prevents catastrophic damage of hydraulic system by informing operator the clogging of hydraulic return filter.

The signal can be monitored via the Komtrax Plus.



Comfortable working space



Comfortable working space

- Wide spacious cab **New**

The spacious cab with wide field of view offers comfortable working experience even at extended hours.

The ergonomic reclining high-back air suspension seat with a heater function has deep side support for excellent holdability and has easy to adjust height and frontrear inclination. Combined with the seat mounted console, the seat has a wide range of adjustment to obtain the optimum working position.

- Low cab noise

The newly-designed cab is highly rigid and has excellent sound insulation ability.

- Arm rest with simple height adjustment function **New**

The addition of a knob and a plunger to the armrest permits the height of the armrest to be easily adjusted without the use of tools.



- Multifunction audio (Optional) **New**

It has functions of AM/FM radio and Bluetooth® wireless technology enabled products can be connected.



* Please contact your local distributor.

- Automatic air conditioner (A/C) **New**
- Adoption of levers with reduced operating force
The newly designed PPC valve reduces the lever operation force, thus enabling comfortable work with less fatigue, even after long hours of operation. A short lever is also available as an option.

Standard equipment :



Sliding window glass (left side)



Sun shield



USB port for charging **New**

Remote intermittent wiper with windshield washer

Defroster (Conform to the ISO 10263-5)

Cigarette lighter

Magazine box & cup holder

Further enhanced safety

Operator's cab

PC950-11R cab satisfies the requirements of OPG top guard level 1 (ISO 10262) for falling objects.

With the installation of a retractable seatbelt, these features securely protect the operator from falling objects.

Lock lever auto lock function New

If the work equipment lever is not in the neutral position when the hydraulic lock lever is released, the equipment is automatically stopped. The lock lever auto lock state is shown on the monitor screen.



Tie-offs New

Preventing accidental falls during repairs.



Safety equipment

• Engine shutdown secondary switch New

Engine shutdown secondary switch at base of seat to shutdown the engine.



• Fall prevention handrail (ISO 2867) New

Easy and safe access all over the machine for inspection and maintenance.



• Retractable seat belt

• Lock lever

When lock lever is placed in lock position all hydraulic controls (travel, swing, boom, arm, bucket and attachment) are inoperable.



• Seat belt caution indicator New

Reminds the operator to fasten the seat belt.



- Emergency escape hammer
- Large side mirrors
- Slip-resistant plates
- Pump/engine room partition
- Travel alarm

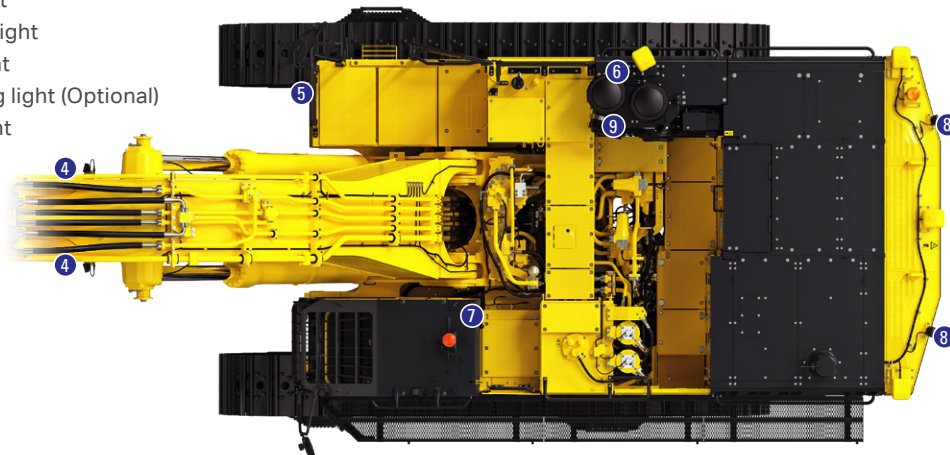
LED light as standard equipment

New

The bright and long life LED light is equipped as standard. Improves visibility in low-light environment ensuring work safety. In addition, the upper left and lower left of the cab have flashlights.

LED light installation location

- ① Front light above cab
(LH: Interconnected horn and flashing light)
- ② Front light below cab
(LH: Interconnected horn and flashing light)
- ③ Step light
- ④ Boom working light (RH, LH)
- ⑤ RH front light
- ⑥ RH working light
- ⑦ Cab rear light
- ⑧ Rear working light (Optional)
- ⑨ Walkway light



ICT

Machine monitor with evolutionary interface New

The monitor screen features a high quality, high resolution LCD panel. Switches are simple and easy-to-use. Function switches make multi-functional operations easy. The high visibility screen has been re-designed so the required information is easier to see and understand, without loss of conventional operability. The main screen can display the surroundings clearly using standard KomVision. Main screen displays of images and/or data can be displayed together or separately easily by pressing F3 key.



Indicators

- | | |
|----------------------------|-------------------------------------|
| 1 Auto-decelerator | 9 ECO gauge |
| 2 Working mode | 10 Engine coolant temperature gauge |
| 3 Travel speed | 11 Hydraulic oil temperature gauge |
| 4 Fuel consumption gauge | 12 Fuel gauge |
| 5 Camera display | 13 Guidance icon |
| 6 Service meter | 14 Function switches |
| 7 Camera direction display | |
| 8 Clock | |

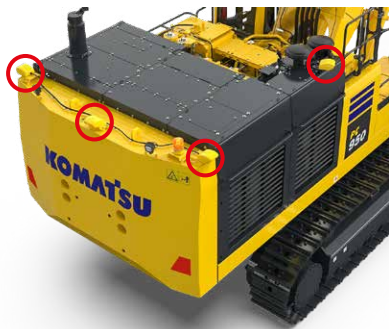
Basic operation switches

- | | |
|-------------------------|-----------------|
| 1 Auto-decelerator | 4 Buzzer cancel |
| 2 Working mode selector | 5 Wiper |
| 3 Travel speed selector | 6 Window washer |



KomVision New

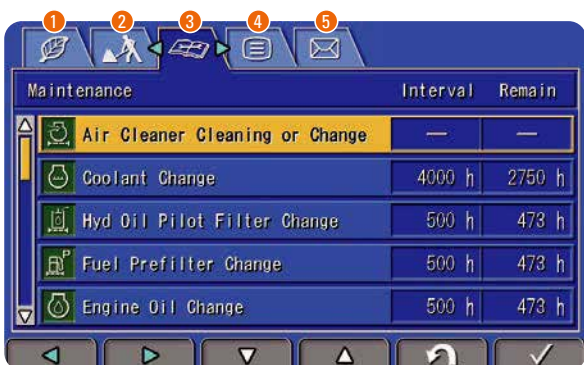
The surroundings of the machine can be displayed on the monitor by using 4 cameras installed at the sides and rear of the machine. Press the switch F4 to toggle between the right, left and rear side view of the machine.



KomVision monitor display

Visual user menu New

Pressing the F6 key on the main screen displays the user menu screen. The menus are grouped for each function, and use easy-to-understand icons which enable the machine to be operated intuitively.



- ① Energy saving guidance
- ② Machine setting
- ③ Maintenance
- ④ Monitor setting
- ⑤ Mail check

Support efficiency improvement

• ECO guidance

While machine is operating, ECO guidance operation tips pops up on the monitor guiding the operator to achieve better fuel efficiency.

• ECO gauge & fuel consumption gauge

The monitor screen includes an ECO gauge and also a fuel consumption gauge which is continuously displayed. In addition, the operator can set any desired target value of fuel consumption (within the range of the green display), enabling the machine to be operated with better fuel economy.

Fuel consumption gauge ECO guidance



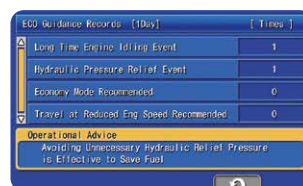
ECO gauge

Operation record, fuel consumption history, and ECO guidance record

The ECO guidance menu enables the operator to check the operation record, fuel consumption history and ECO guidance record from the ECO guidance menu, using a single touch, thus enabling the total fuel consumption to be reduced.



Operation records



ECO guidance records



Average fuel consumption logs

Maintenance

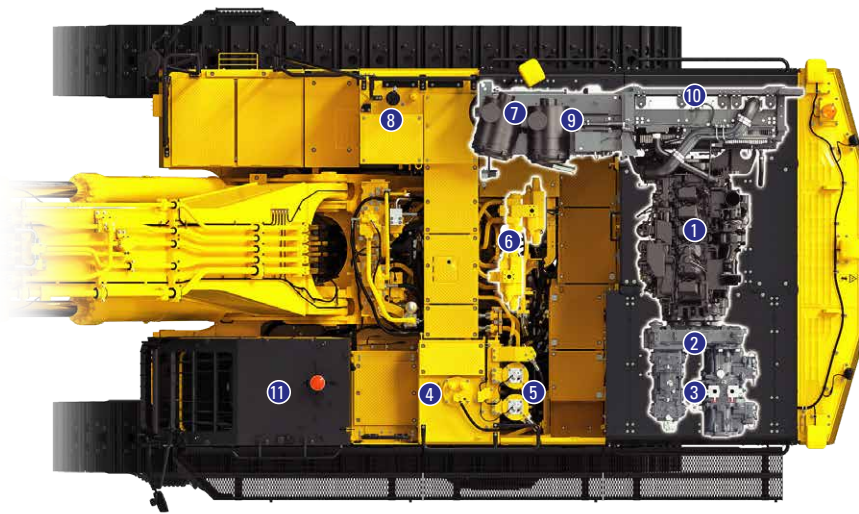
Equipped with walk-through and catwalks for safe and easy maintenance New

Maintenance points are centrally located, and walk-throughs are provided for easy access.

The front engine door also opens wide for easy access to auxiliary equipment. A catwalk is provided as optional on the right side of this hydraulic excavator, enabling safe inspections of the cooling area.



RH catwalk (Optional)



- | | |
|------------------------|---------------|
| ① Engine | ⑦ Air cleaner |
| ② PTO | ⑧ Fuel tank |
| ③ Hydraulic pump | ⑨ Oil cooler |
| ④ Hydraulic oil tank | ⑩ Radiator |
| ⑤ Hydraulic oil filter | ⑪ Cab |
| ⑥ Control valve | |

- Electric pump, grease gun with indicator
Greasing is made easy with the electric pump.



- Take out the electric grease gun on the ground
You can grease the work equipment easily with electric grease gun which you can take out on ground.



- Easier cleaning of the oil cooler, air-conditioner condenser, and fuel cooler **New**

The hinged air-conditioner condenser and fuel cooler allow easy access to each core part for easy cleaning.



- Easy cleaning of cooling unit
Reverse-rotation function of the hydraulic driven fan facilitates cleaning of the cooling unit.



- Sealed engine cooling system **New**
Not only has the cooling system efficiency been improved, it can also operate maintenance-free until the cooling water is replaced.



PC950-11R : 25 L



PC800/850-8E0 : 9 L×2

- Alternator, compressor belt auto tensioner **New**
- Electric priming pump **New**
- Battery disconnect switch

- Maintenance-free battery **New**
The high-performance battery eliminates the inconvenience of having to top up the battery fluid.

- Extended replacement interval of hydraulic oil filter **Upgrade**
The replacement interval of the hydraulic oil filter element is extended by 2.5 times. it contributes to reduction of maintenance cost.

1,000 hours →

2,500 hours

- “Maintenance time caution lamp” display
When the remaining time to maintenance becomes less than 30 hours*, the maintenance time monitor appears. Pressing the F6 key switches the monitor to the maintenance screen.

* The setting can be changed within the range between 10 and 200 hours.



Maintenance	Interval	Remain
Air Cleaner Cleaning or Change	—	—
Coolant Change	4000 h	2750 h
Hyd Oil Pilot Filter Change	500 h	473 h
Fuel Prefilter Change	500 h	473 h
Engine Oil Change	500 h	473 h

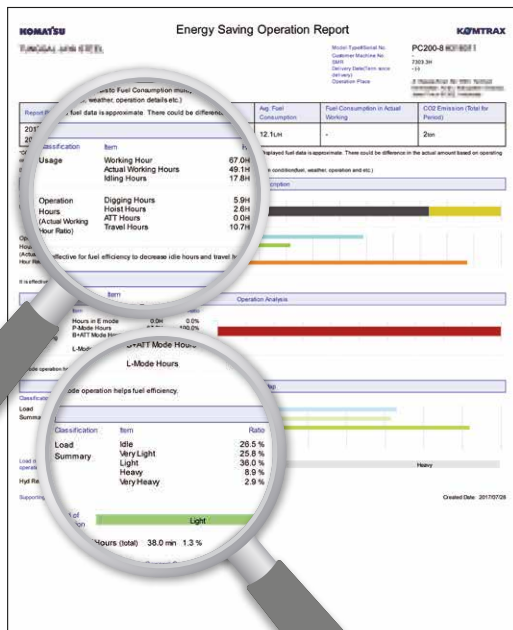
Maintenance screen

KOMTRAX

The Komatsu remote monitoring and management technology provides insightful data about your equipment and fleet in user-friendly format.

Energy saving operation report

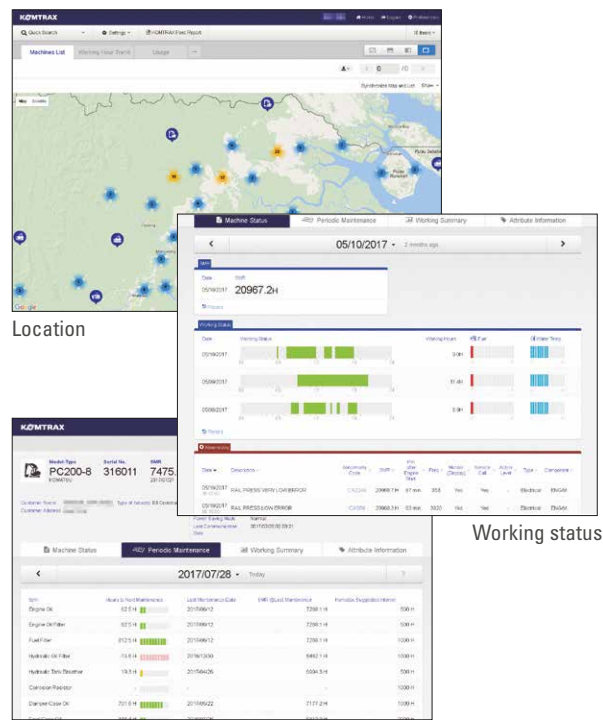
Komtrax delivers the energy-saving operation report based on the operating information such as fuel consumption, load summary and idling time, which helps you efficiently run a business.



This report image is an example of hydraulic excavator

Equipment management support

Through the web application, a variety of search parameters are available to quickly find information about specific machines based on key factors. Moreover, Komtrax finds out machines with problems from your fleet and shows you through an optimal interface.



Location

Working status

Periodic maintenance

The report contents and data depend on the machine model.

Optimal strategy for efficient work

The detailed information that Komtrax puts at your fingertips helps you manage your fleet conveniently on the web anytime, anywhere. It gives you the power to make better daily and long-term strategic decisions.



Transportation

Large production machine designed for easy transportation between jobsite locations

Machine design allows for low transportation height and reduces transportation costs. Less disassembly required to meet transportation weight requirements. Removing bucket (3,900 - 4,000 kg), arm (5,100 - 5,300 kg) and counterweight (12,800 kg) reduces transportation weight down to under 70,307 kg. (Actual weight may vary with different work equipment and attachments).

Variable track gauge

The track gauge can be adjusted from 3,350 mm to 3,530 mm for 900 mm shoes and from 3170 mm to 3,530 mm for 650 mm and



750 mm shoes to provide narrow trailer loading capabilities or increased machine stability.

Support

Komatsu total support

Komatsu Distributor is ready to provide variety of support before and after procuring machine to keep customers machine available and minimize operation cost.

Fleet recommendation

Komatsu Distributor can study customer job site and provide the most optimum fleet recommendation with detailed information to meet all of your application needs when you are considering to buy new machines or to replace the existing ones from Komatsu.

Product support

Komatsu Distributor secure the quality of machine by offering quality repair and maintenance services to the customer using Komatsu developed programs.

- Preventive Maintenance (PM) Clinic
- Komatsu Oil and Wear Analysis (KOWA)
- Undercarriage inspection service, etc.

Genuine parts and genuine oil

Komatsu Distributor will promptly and smoothly offer genuine parts and genuine oil guaranteed quality to various jobsites. Genuine oil is developed by Komatsu so that it is best matched for our Komatsu engines and hydraulic components. It maximizes engine and hydraulic components performance and prolong life.

Service contract

Komatsu Distributor offers several service package of repair and maintenance for a contracted period with optimum cost. Customer can be "worry-free" by trusting Komatsu Distributor skilled service.

Extended warranty

Extended warranty with several options available. Komatsu guarantee skilled repair with genuine parts and protection from unexpected expenses.

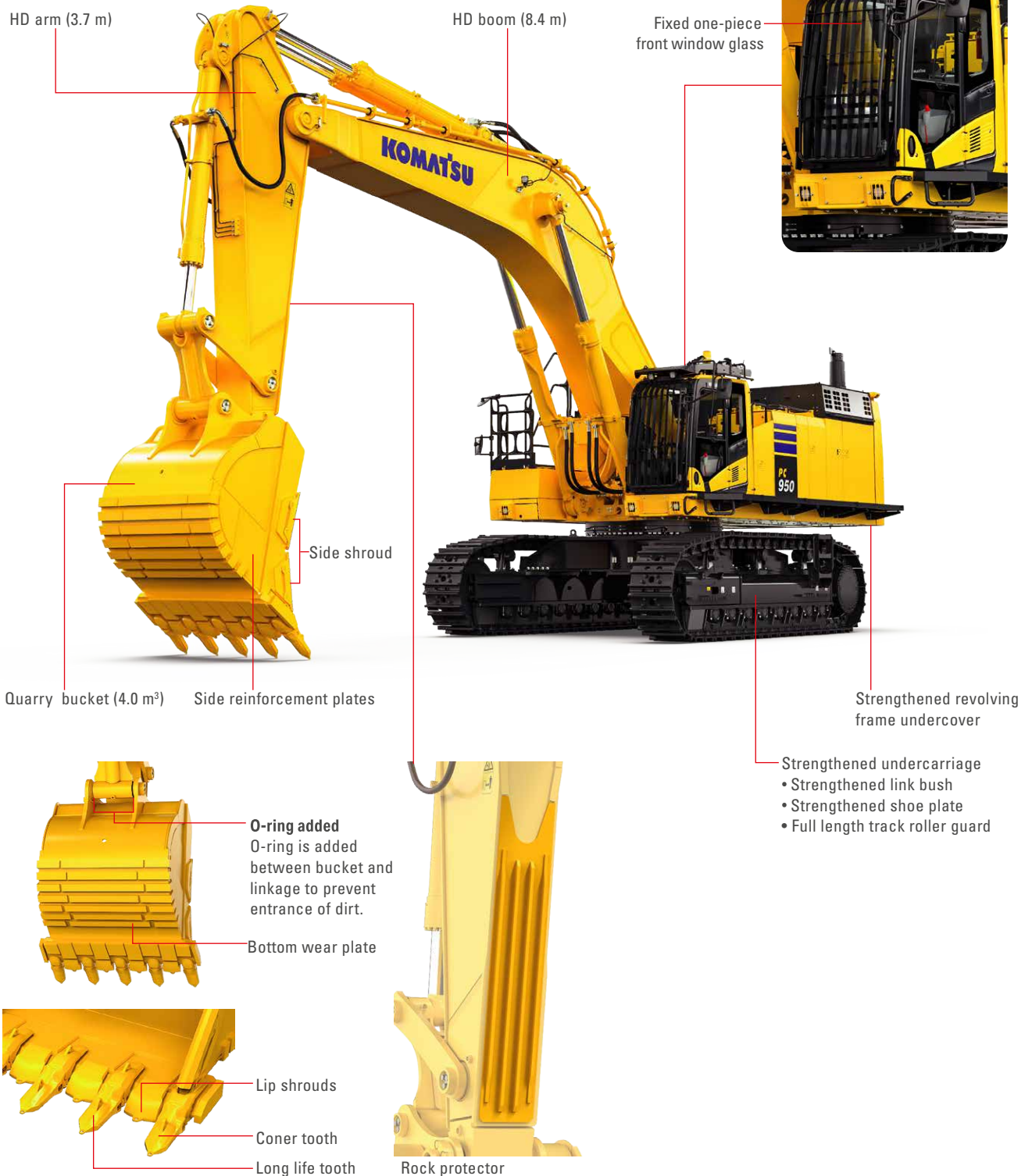
Operator training

Komatsu Distributor can provide excellent operator training which enables them to operate machine safely & efficiently and to maintain machine properly.

Introduction of specifications

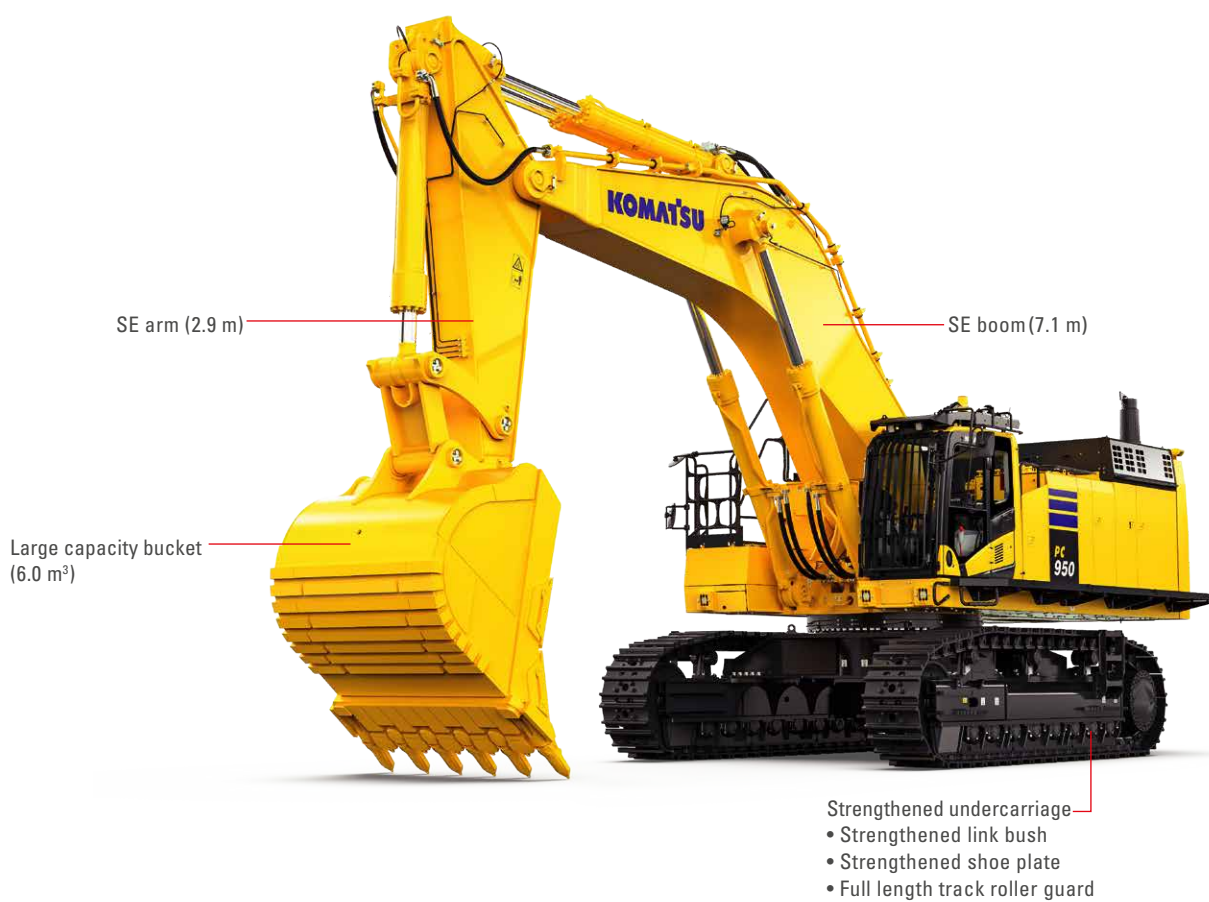
PC950-11R Heavy Duty (HD) spec.

Each part of the excavator and body is forged and reinforced. These heavy-duty specifications are designed to demonstrate the excavator's power in hard workplaces, such as quarry and mine sites.



PC950-11R SE spec.

The large capacity bucket and short boom are designed for loading work at quarry sites or other sites requiring large productivity.



SE arm (2.9 m)

SE boom (7.1 m)

Large capacity bucket
(6.0 m³)

Strengthened undercarriage
• Strengthened link bush
• Strengthened shoe plate
• Full length track roller guard

Bucket lineup

PC950-11R

HD spec. / SE spec.

	Heavy duty bucket	SE bucket	Large SE bucket
Bucket shape			
Wear plate location			
<div style="display: flex; align-items: center;"> <div style="width: 15px; height: 10px; background-color: #90EE90; border: 1px solid black; margin-right: 5px;"></div> Side shroud, side cutter </div> <div style="display: flex; align-items: center;"> <div style="width: 15px; height: 10px; background-color: #ADD8E6; border: 1px solid black; margin-right: 5px;"></div> Wear plate </div>			
Bucket capacity* ¹	4.0 m ³	6.0 m ³	6.5 m ³
Lip shape	Straight	Straight	Spade
Bucket width (With shroud /Max.width* ²)	1,970 mm / 2,230 mm	2,230 mm / 2,490 mm	2,470 mm / 2,720 mm
Bucket weight	4,580 kg	6,000 kg	6,430 kg
Tooth type	Kprime (Horizontal pin: Hammerless)	Kprime (Horizontal pin: Hammerless)	Kprime (Horizontal pin: Hammerless)
Number of teeth	5	6	6
Side cutter	No	No	No
Side shroud	Yes	Yes	Yes
Backlash adjustment	Yes	Yes	Yes
8.4 m HD boom 3.7 m HD arm	○	×	×
7.1 m SE boom 2.9 m SE arm	×	○	△
Excavating condition and material	Heavy duty	General-purpose, Heavy duty	General-purpose, Heavy duty

	General purpose bucket	Narrow bucket
Bucket shape		
Wear plate location		
<div style="display: flex; align-items: center;"> <div style="width: 15px; height: 10px; background-color: #90EE90; border: 1px solid black; margin-right: 5px;"></div> Side shroud, side cutter </div> <div style="display: flex; align-items: center;"> <div style="width: 15px; height: 10px; background-color: #ADD8E6; border: 1px solid black; margin-right: 5px;"></div> Wear plate </div>		
Bucket capacity* ¹	4.9 m ³	4.6 m ³
Lip shape	Straight	Straight
Bucket width (Including side cutter, shroud)	2,335 mm	2,225 mm
Bucket weight	4,050 kg	3,880 kg
Tooth type	Kprime (Horizontal pin: Hammerless)	Kprime (Horizontal pin: Hammerless)
Number of teeth	5	5
Side cutter	Yes	Yes
Side shroud	No	No
Backlash adjustment	Yes	Yes
8.4 m HD boom 3.7 m HD arm	△	△
7.1 m SE boom 2.9 m SE arm	×	×
Excavating condition and material	General-purpose	General-purpose

*1 The recommended material density for each bucket is listed below. Using the bucket above the recommended material density may result to decreased machine durability. *2 Lip of the bucket is the maximum width.

○: Material density up to 1.8 t/m³ △: Material density up to 1.5 t/m³ and easy digging such as well blasted material or loose soils. ×: Not applicable

Kprime tooth

Safety enhancements

- Intuitive locking system
- Low torque pin for easy tooth changes
- Pin push-out function for removal has been added to improve workability.

Reliability

- Improved stability through tighter fit design of tooth to adapter
- New pin structure improves the durability of the locking mechanism and allows for repeated use.

Productivity

- 10% - 15% increased usable wear material
- Designed to stay sharp for the life of the tooth
- Wear indicator tells you when to replace pins

Kprime tooth installation



* To remove fastener, use the correct size socket to rotate the pin locking shaft 90° counter-clockwise. Making sure click sound to finish the removal.

Standard and optional equipment

Engine

Alternator & A/C compressor auto-tensioner	●
Automatic engine warm-up system	●
Dry type air cleaner, double element	●
Engine, Komatsu SAA6D140E-7	●
Fuel pre-filter with water separator	●
Variable speed cooling fan, hydraulic drive, reversible	●

Electrical system

Alternator, 24 V/90 A	●
Auto-decelerator and auto idle shutdown	●
Batteries, 2 x 12 V/196 Ah (Maintenance free batteries)	●
Battery disconnect switch	●
Circuit breaker	●
Horn, electric	●
Starting motor, 24 V/11 kW	●
Working LED light (2 boom, 4 cab, 2 right front) *Two LEDs on the cab are linked to the horn and serve as flashlights.	●
Rear LED light (2 counterweight)	○
Maintenance LED light (1 cab, 1 forward of engine)	●
Step light with timer	●

Hydraulic system

3-mode system (P+, P, E)	●
In-line high pressure filters	●
Proportional Pressure Control (PPC) hydraulic control system	●
Two-mode setting for boom	●
Shockless control system for boom	●

Guards and covers

Fan guard structure	●
Strengthened revolving frame underguard	●
Cab guards, bolt-on top guard, OPG Level 2 (ISO 10262)	○
Cab guards, full front guard, OPG Level 2 (ISO 10262)	○

Undercarriage

Hydraulic track adjusters (Each side)	●
650 mm double grouser shoes	○
750 mm double grouser shoes	○
900 mm double grouser shoes	○

Operator environment

A/C with defroster	●
Cab with fixed front window	●
Engine shutdown secondary switch	●
High-back suspension seat, heated	●
Large high resolution LCD monitor	●
Lock lever	●
Operator protective top guard (OPG), level 1 (ISO 10262)	●
Mirrors (RH, LH)	●
KomVision	●
Seat belt, retractable, 78 mm	●
Washable cab floor mat	●
Multifunction audio	○
Short lever	○
Rain visor	○
Lower wiper	○
Beacon lamp	○

Work equipment

3,700 mm HD arm assembly	○
2,945 mm SE arm assembly	○
8,400 mm HD boom assembly	○
7,100 mm SE boom assembly	○

Other equipment

Equipment Management Monitoring System	●
Grease gun, electric pump type	●
Hand rails & guard	●
Komtrax	●
Preventive Maintenance (PM) tune-up service connector	●
Rear reflector	●
Slip-resistant plates	●
Travel alarm	●
Wide catwalk (LH)	●
Wide catwalk (RH)	○
Fuel quick charge preparation	○
Quick oil sampling	○

Further equipment on request ●: Standard equipment ○: Optional equipment

Specifications

Engine

Model	Komatsu SAA6D140E-7
Type	4-cycle, water-cooled, direct injection
Aspiration	Turbocharged, aftercooled
Number of cylinders	6
Bore	140 mm
Stroke	165 mm
Piston displacement	15.24 L
Governor	All-speed, electronic
Horsepower:	
SAE J 1995	Gross 405 kW / 543 hp
ISO 14396	405 kW / 543 hp
ISO 9249 / SAE J1349*	Net 401 kW / 538 hp
Rated rpm	1,800 min ⁻¹
Fan drive type	Hydraulic

* Net horsepower at the maximum speed of radiator cooling fan is 383 kW 513 hp.
U.S. EPA Tier 2 emissions equivalent.

Hydraulic system

Type	Open-center load-sensing system
Number of selectable working modes	3
Main pump	
Type	Variable-capacity piston pumps
Pumps for	Boom, arm, bucket and travel circuits
Maximum flow	1,206 L/min
Fan drive pump	Variable capacity piston type
Hydraulic motors	
Travel	2 x axial piston motor with parking brake
Swing	2 x axial piston motor with swing holding brake
Relief valve setting	
Implement circuits	34.3 MPa 350 kgf/cm ²
Travel circuit	34.3 MPa 350 kgf/cm ²
Swing circuit	27.0 MPa 275 kgf/cm ²
Pilot circuit	2.9 MPa 30 kgf/cm ²
Hydraulic cylinders (number of cylinders – bore x stroke x rod diameter):	
Boom	2 – 210 mm x 2,083 mm x 150 mm
Arm (HD)	2 – 170 mm x 1,936 mm x 120 mm
(SE)	2 – 185 mm x 1,671 mm x 120 mm
Bucket (HD)	1 – 185 mm x 1,893 mm x 130 mm
(SE)	1 – 225 mm x 1,658 mm x 160 mm

Operating weight (approximate)

PC950-11R HD spec.:

Operating weight, including 8,400 mm boom, 3,700 mm arm, heaped 4.0 m³ backhoe bucket, operator, lubricant, coolant, full fuel tank, and the standard equipment

PC950-11R SE spec.:

Operating weight, including 7,100 mm boom, 2,945 mm arm, heaped 6.0 m³ backhoe bucket, operator, lubricant, coolant, full fuel tank, and the standard equipment

Shoes	PC950-11R HD spec.		Shoes	PC950-11R SE spec.	
	Operating weight	Ground pressure		Operating weight	Ground pressure
650 mm	93,900 kg	139 kPa 1.42 kgf/cm ²	650 mm	95,300 kg	141 kPa 1.44 kgf/cm ²
750 mm	94,600 kg	121 kPa 1.24 kgf/cm ²	750 mm	96,000 kg	123 kPa 1.26 kgf/cm ²
900 mm	95,600 kg	102 kPa 1.04 kgf/cm ²	900 mm	97,100 kg	104 kPa 1.06 kgf/cm ²

Swing system

Driven method	Hydraulic motors
Swing reduction	Planetary gear
Swing circle lubrication	Grease-bathed
Swing lock	Oil disc brake
Swing speed	6.8 min ⁻¹

Drives and brakes

Steering control	Two levers with pedals
Drive method	Fully hydrostatic
Travel motor	Axial piston motor, in-shoe design
Reduction system	Planetary gear triple reduction
Maximum drawbar pull	670 kN 68,300 kgf
Gradeability	70%
Maximum travel speed (Lo / Hi)	2.7 / 4.0 km/h
Service brake	Hydraulic lock
Parking brake	Oil disc brake

Undercarriage

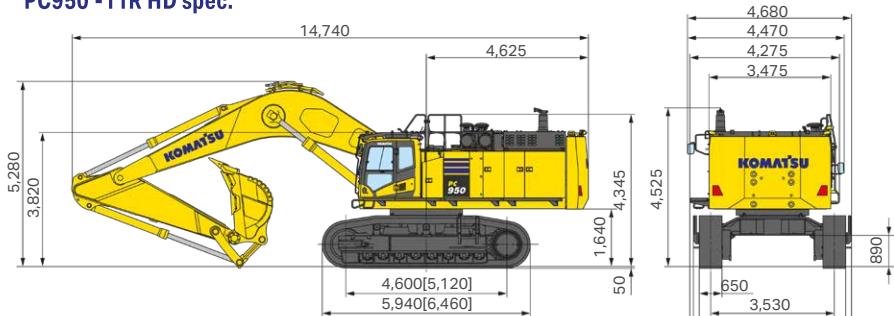
Center frame	H-leg frame
Track frame	Box-section
Seal of track	Sealed
Track adjuster	Hydraulic
Number of shoes (each side)	
PC950-11R	48
Number of carrier rollers (each side)	3
Number of track rollers (each side)	
PC950-11R	8

Coolant and lubricant capacity (refilling)

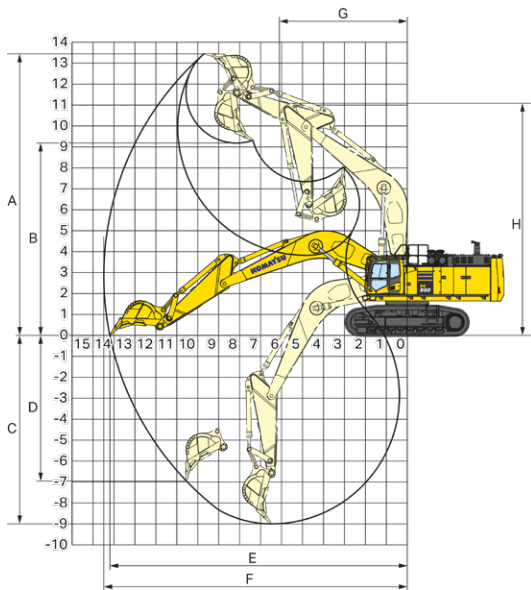
Fuel tank	1,045 L
Radiator	82 L
Engine	57 L
Final drive (each side)	21.5 L
Swing drive	25 L x 2
Hydraulic tank	540 L

Dimensions / Working range

PC950 -11R HD spec.



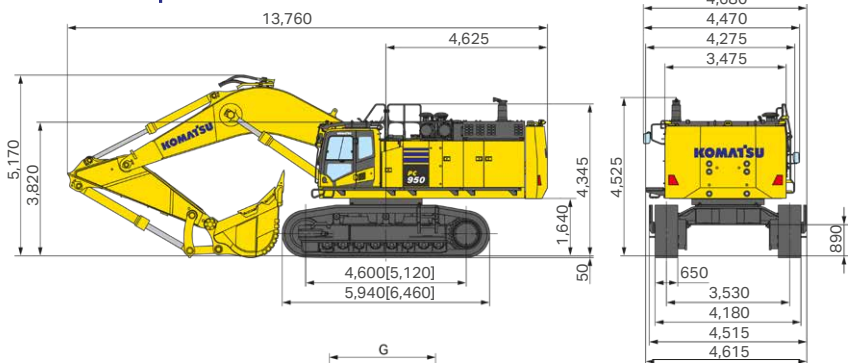
Unit: mm



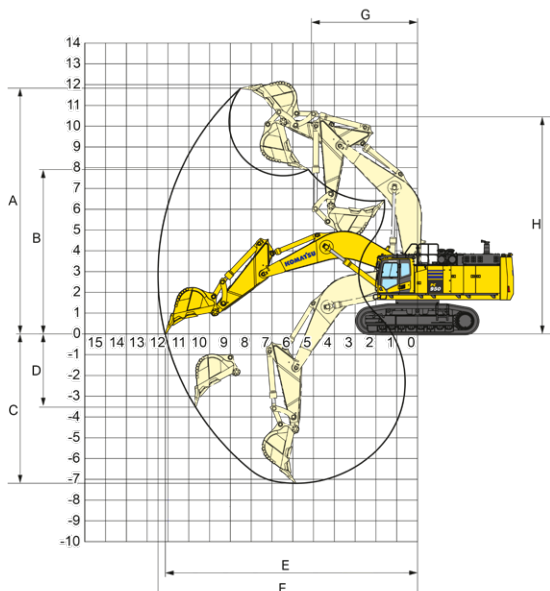
PC950 -11R HD spec.

Boom	HD boom 8.4 m
Arm	HD arm 3.7 m
Bucket capacity	4.0 m ³
A Max. digging height	13,445 mm
B Max. dumping height	9,185 mm
C Max. digging depth	8,995 mm
D Max. vertical wall digging depth	6,960 mm
E Max. digging reach at ground level	14,195 mm
F Max. digging reach	14,485 mm
G Min. swing radius	6,105 mm
H Min. swing radius height	11,085 mm
Arm crowd force (ISO 6015)	310 kN (31,600 kgf)
Bucket digging force (ISO 6015)	403 kN (41,100 kgf)

PC950 -11R SE spec.



Unit: mm

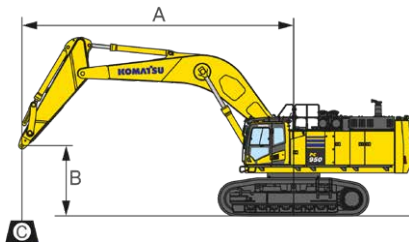


PC950 -11R SE spec.

Boom	SE boom 7.1 m
Arm	SE arm 2.9 m
Bucket capacity	6.0 m ³
A Max. digging height	11,825 mm
B Max. dumping height	7,615 mm
C Max. digging depth	7,190 mm
D Max. vertical wall digging depth	3,530 mm
E Max. digging reach at ground level	12,140 mm
F Max. digging reach	12,480 mm
G Min. swing radius	5,145 mm
H Min. swing radius height	10,475 mm
Arm crowd force (ISO 6015)	385 kN (39,300 kgf)
Bucket digging force (ISO 6015)	502 kN (51,200 kgf)

PC950-11R

Lifting capacity



- A: Reach from swing center
- B: Arm top pin height
- C: Lifting capacity
- Cf: Rating over front
- Cs: Rating over side
- ⊗: Rating at maximum reach

PC950-11R HD spec. Boom: 8,400 mm Arm: 3,700 mm Without bucket Shoe: 650 mm triple grouser

A	⊗ MAX		10.5 m		9.0 m		7.5 m		6.0 m		4.5 m		3.0 m	
	Cf	Cs	Cf	Cs	Cf	Cs	Cf	Cs	Cf	Cs	Cf	Cs	Cf	Cs
7.5 m	*10,900 kg	*10,900 kg	*16,650 kg	16,000 kg	*19,050 kg	*19,050 kg								
6.0 m	*10,900 kg	*10,900 kg	*18,150 kg	15,650 kg	*20,200 kg	20,150 kg	*23,400 kg	*23,400 kg	*28,800 kg	*28,800 kg				
4.5 m	*11,150 kg	*11,150 kg	*18,800 kg	15,150 kg	*21,500 kg	19,250 kg	*25,700 kg	25,300 kg	*33,150 kg	*33,150 kg				
3.0 m	*11,600 kg	*11,600 kg	18,850 kg	14,600 kg	*22,650 kg	18,400 kg	*27,650 kg	23,900 kg	*33,900 kg	32,650 kg				
1.5 m	*12,400 kg	11,600 kg	18,350 kg	14,150 kg	23,000 kg	17,700 kg	*28,800 kg	22,850 kg	*28,600 kg	*28,600 kg				
0 m	*13,550 kg	11,850 kg	18,050 kg	13,850 kg	22,500 kg	17,200 kg	*28,900 kg	22,200 kg	*33,450 kg	30,800 kg				
-1.5 m	*15,350 kg	12,550 kg	17,900 kg	13,700 kg	22,250 kg	16,950 kg	*27,950 kg	21,950 kg	*34,600 kg	30,700 kg	*22,450 kg	*22,450 kg		
-3.0 m	*16,650 kg	13,850 kg	*16,650 kg	13,850 kg	*21,200 kg	17,000 kg	*25,900 kg	22,000 kg	*31,600 kg	30,900 kg	*34,700 kg	*34,700 kg	*24,800 kg	*24,800 kg
-4.5 m	*15,800 kg	*15,800 kg			*17,650 kg	17,350 kg	*22,300 kg	*22,300 kg	*27,050 kg	*27,050 kg	*31,950 kg	*31,950 kg		
-6.0 m	*13,750 kg	*13,750 kg					*15,900 kg	*15,900 kg	*20,150 kg	*20,150 kg	*23,250 kg	*23,250 kg		

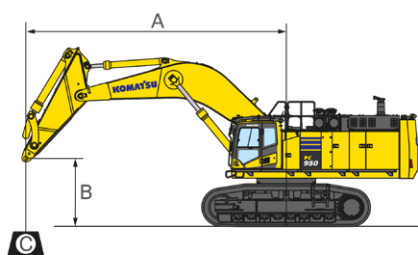
PC950-11R HD spec. Boom: 8,400 mm Arm: 3,700 mm Without bucket Shoe: 750 mm triple grouser

A	⊗ MAX		10.5 m		9.0 m		7.5 m		6.0 m		4.5 m		3.0 m	
	Cf	Cs	Cf	Cs	Cf	Cs	Cf	Cs	Cf	Cs	Cf	Cs	Cf	Cs
7.5 m	*10,900 kg	*10,900 kg	*16,650 kg	16,150 kg	*19,050 kg	*19,050 kg								
6.0 m	*10,900 kg	*10,900 kg	*18,150 kg	15,750 kg	*20,200 kg	*20,200 kg	*23,400 kg	*23,400 kg	*28,800 kg	*28,800 kg				
4.5 m	*11,150 kg	*11,150 kg	*18,800 kg	15,250 kg	*21,500 kg	*19,400 kg	*25,700 kg	25,450 kg	*33,150 kg	*33,150 kg				
3.0 m	*11,600 kg	*11,600 kg	19,000 kg	14,750 kg	*22,650 kg	18,550 kg	*27,600 kg	24,050 kg	*33,900 kg	32,900 kg				
1.5 m	*12,400 kg	11,700 kg	18,500 kg	14,300 kg	23,200 kg	17,850 kg	*28,800 kg	23,000 kg	*28,600 kg	*28,600 kg				
0 m	*13,550 kg	11,950 kg	18,200 kg	13,950 kg	22,700 kg	17,350 kg	*28,900 kg	22,400 kg	*33,450 kg	31,000 kg				
-1.5 m	*15,350 kg	12,650 kg	18,050 kg	13,850 kg	22,450 kg	17,100 kg	*27,950 kg	22,150 kg	*34,600 kg	30,950 kg	*22,450 kg	*22,450 kg		
-3.0 m	*16,650 kg	13,950 kg	*16,650 kg	14,000 kg	*21,200 kg	17,150 kg	*25,900 kg	22,200 kg	*31,600 kg	31,150 kg	*34,700 kg	*34,700 kg	*24,800 kg	*24,800 kg
-4.5 m	*15,800 kg	*15,800 kg			*17,650 kg	17,500 kg	*22,300 kg	*22,300 kg	*27,050 kg	*27,050 kg	*31,950 kg	*31,950 kg		
-6.0 m	*13,750 kg	*13,750 kg					*15,900 kg	*15,900 kg	*20,150 kg	*20,150 kg	*23,250 kg	*23,250 kg		

PC950-11R HD spec. Boom: 8,400 mm Arm: 3,700 mm Without bucket Shoe: 900 mm triple grouser

A	⊗ MAX		10.5 m		9.0 m		7.5 m		6.0 m		4.5 m		3.0 m	
	Cf	Cs	Cf	Cs	Cf	Cs	Cf	Cs	Cf	Cs	Cf	Cs	Cf	Cs
7.5 m	*10,900 kg	*10,900 kg	*16,650 kg	16,300 kg	*19,050 kg	*19,050 kg								
6.0 m	*10,900 kg	*10,900 kg	*18,150 kg	15,950 kg	*20,200 kg	*20,200 kg	*23,400 kg	*23,400 kg	*28,800 kg	*28,800 kg				
4.5 m	*11,150 kg	*11,150 kg	*18,800 kg	15,450 kg	*21,500 kg	19,600 kg	*25,700 kg	*25,700 kg	*33,150 kg	*33,150 kg				
3.0 m	*11,600 kg	*11,600 kg	19,200 kg	14,900 kg	*22,650 kg	18,750 kg	*27,650 kg	24,350 kg	*33,900 kg	33,250 kg				
1.5 m	*12,400 kg	11,850 kg	18,750 kg	14,450 kg	*23,450 kg	18,050 kg	*28,800 kg	23,300 kg	*28,600 kg	*28,600 kg				
0 m	*13,550 kg	12,100 kg	18,400 kg	14,150 kg	23,000 kg	17,550 kg	*28,900 kg	22,650 kg	*33,450 kg	31,400 kg				
-1.5 m	*15,350 kg	12,800 kg	18,250 kg	14,000 kg	22,750 kg	17,300 kg	*27,950 kg	22,400 kg	*34,600 kg	31,300 kg	*22,450 kg	*22,450 kg		
-3.0 m	*16,650 kg	14,150 kg	*16,650 kg	14,150 kg	*21,200 kg	17,350 kg	*25,900 kg	22,450 kg	*31,600 kg	31,500 kg	*34,700 kg	*34,700 kg	*24,800 kg	*24,800 kg
-4.5 m	*15,800 kg	*15,800 kg			*17,650 kg	*17,650 kg	*22,300 kg	*22,300 kg	*27,050 kg	*27,050 kg	*31,950 kg	*31,950 kg		
-6.0 m	*13,750 kg	*13,750 kg					*15,900 kg	*15,900 kg	*20,150 kg	*20,150 kg	*23,250 kg	*23,250 kg		

* Load is limited by hydraulic capacity rather than tipping. Ratings are based on ISO 10567. Rated loads do not exceed 87% of hydraulic lift capacity or 75% of tipping load.



A: Reach from swing center
 B: Arm top pin height
 C: Lifting capacity

Cf: Rating over front
 Cs: Rating over side
 ⊗: Rating at maximum reach

PC950-11R SE spec. Boom: 7,100 mm Arm: 2,900 mm Without bucket Shoe: 650 mm triple grouser

A	⊗ MAX		10.5 m		9.0 m		7.5 m		6.0 m		4.5 m		3.0 m	
	Cf	Cs	Cf	Cs	Cf	Cs	Cf	Cs	Cf	Cs	Cf	Cs	Cf	Cs
7.5 m	*22,050 kg	21,500 kg					*24,950 kg	*24,950 kg						
6.0 m	*22,200 kg	18,600 kg			*23,250 kg	20,000 kg	*26,300 kg	*26,300 kg	*31,350 kg	*31,350 kg	*41,050 kg	*41,050 kg		
4.5 m	21,700 kg	16,950 kg			*23,900 kg	19,400 kg	*28,050 kg	25,800 kg	*35,050 kg	*35,050 kg				
3.0 m	20,800 kg	16,200 kg			24,200 kg	18,800 kg	*29,500 kg	24,650 kg	*37,850 kg	34,250 kg				
1.5 m	20,750 kg	16,100 kg			23,650 kg	18,250 kg	*30,150 kg	23,750 kg	*38,600 kg	32,900 kg				
0 m	21,600 kg	16,700 kg			23,300 kg	17,950 kg	*29,400 kg	23,250 kg	*37,200 kg	32,300 kg				
-1.5 m	*21,200 kg	18,300 kg					*27,000 kg	23,100 kg	*33,850 kg	32,250 kg	*41,450 kg	*41,450 kg	*31,500 kg	*31,500 kg
-3.0 m	*19,800 kg	*19,800 kg					*21,900 kg	*21,900 kg	*28,100 kg	*28,100 kg	*33,700 kg	*33,700 kg		
-4.5 m	*15,900 kg	*15,900 kg							*18,050 kg	*18,050 kg				
-6.0 m														

PC950-11R SE spec. Boom: 7,100 mm Arm: 2,900 mm Without bucket Shoe: 750 mm triple grouser

A	⊗ MAX		10.5 m		9.0 m		7.5 m		6.0 m		4.5 m		3.0 m	
	Cf	Cs	Cf	Cs	Cf	Cs	Cf	Cs	Cf	Cs	Cf	Cs	Cf	Cs
7.5 m	*22,050 kg	21,500 kg					*24,950 kg	*24,950 kg						
6.0 m	*22,200 kg	18,600 kg			*23,250 kg	20,000 kg	*26,300 kg	*26,300 kg	*31,350 kg	*31,350 kg	*41,050 kg	*41,050 kg		
4.5 m	21,700 kg	16,950 kg			*23,900 kg	19,400 kg	*28,050 kg	25,800 kg	*35,050 kg	*35,050 kg				
3.0 m	20,800 kg	16,200 kg			24,200 kg	18,800 kg	*29,500 kg	24,650 kg	*37,850 kg	34,250 kg				
1.5 m	20,750 kg	16,100 kg			23,650 kg	18,250 kg	*30,150 kg	23,750 kg	*38,600 kg	32,900 kg				
0 m	21,600 kg	16,700 kg			23,300 kg	17,950 kg	29,400 kg	23,250 kg	*37,200 kg	32,300 kg				
-1.5 m	*21,200 kg	18,300 kg					*27,000 kg	23,100 kg	*33,850 kg	32,250 kg	*41,450 kg	*41,450 kg	*31,500 kg	*31,500 kg
-3.0 m	*19,800 kg	*19,800 kg					*21,900 kg	*21,900 kg	*28,100 kg	*28,100 kg	*33,700 kg	*33,700 kg		
-4.5 m	*15,900 kg	*15,900 kg							*18,050 kg	*18,050 kg				
-6.0 m														

PC950-11R SE spec. Boom: 7,100 mm Arm: 2,900 mm Without bucket Shoe: 900 mm triple grouser

A	⊗ MAX		10.5 m		9.0 m		7.5 m		6.0 m		4.5 m		3.0 m	
	Cf	Cs	Cf	Cs	Cf	Cs	Cf	Cs	Cf	Cs	Cf	Cs	Cf	Cs
7.5 m	*22,050 kg	21,900 kg					*24,950 kg	*24,950 kg						
6.0 m	*22,200 kg	18,950 kg			*23,250 kg	20,350 kg	*26,300 kg	*26,300 kg	*31,350 kg	*31,350 kg	*41,050 kg	*41,050 kg		
4.5 m	22,150 kg	17,900 kg			*23,900 kg	19,800 kg	*28,050 kg	26,250 kg	*35,050 kg	*35,050 kg				
3.0 m	21,200 kg	16,500 kg			*24,500 kg	19,150 kg	*29,500 kg	25,100 kg	*37,850 kg	34,850 kg				
1.5 m	21,150 kg	16,400 kg			24,100 kg	18,600 kg	*30,150 kg	24,200 kg	*38,600 kg	33,500 kg				
0 m	*21,800 kg	17,050 kg			*23,600 kg	18,300 kg	*29,400 kg	23,700 kg	*37,200 kg	32,900 kg				
-1.5 m	*21,200 kg	18,700 kg					*27,000 kg	23,550 kg	*33,850 kg	32,850 kg	*41,450 kg	*41,450 kg	*31,500 kg	*31,500 kg
-3.0 m	*19,800 kg	*19,800 kg					*21,900 kg	*21,900 kg	*28,100 kg	*28,100 kg	*33,700 kg	*33,700 kg		
-4.5 m	*15,900 kg	*15,900 kg							*18,050 kg	*18,050 kg				
-6.0 m														

* Load is limited by hydraulic capacity rather than tipping. Ratings are based on ISO 10567. Rated loads do not exceed 87% of hydraulic lift capacity or 75% of tipping load.

Product designs, specifications and/or data in this document are provided for informational purposes only and are not warranties of any kind. Product designs and/or specifications may be changed at any time without notice. The only warranties that apply to sales of products and services are Komatsu's standard written warranties, which will be furnished upon request.

Komatsu and other trademarks and service marks used herein are the property of Komatsu Ltd., Komatsu America Corp., Komatsu Mining Corp., or one of their affiliates, or the respective owners or licensees

KOMATSU

www.komatsulatioamerica.com

