

KOMATSU

PC240LC-8

Made in Brazil / KDB



Hydraulic excavator

Horsepower

Gross: 180 hp (134 kW) @ 2,000 rpm

Net: 168 hp (125 kW) @ 2,000 rpm

Operating weight

24,850 - 25,400 kg

Bucket capacity

1.73 m³

Walk-around

One of a kind machine with unparalleled advantages

Komatsu dash 8 excavators are high productivity and performance machines, specialized to provide productivity, durability, and low operating cost.

- Komatsu's exclusive HydraMind system is present in all operations and adjusts individual work applications automatically, increasing performance.
- Design that reinforces ecologic and economy features.
- Low fuel consumption by completely controlling engine, hydraulic, and electronic systems.

Low Emission Engine

Turbocharged, air-to-air aftercooled Komatsu SAA6D107E-1 diesel engine that provides gross horsepower of 180 hp. This engine complies with EPA Tier3 and EU Stage 3A (equivalent) emission regulations, without sacrificing power or machine productivity.

- Economy mode improves fuel consumption ratio.
- Eco gauge for energy-saving operations.
- Extended idling caution for fuel conservation that alerts the operator of long idle periods.

Low operating noise

- Low-noise cab, like a passenger car.

Innovative design that cares for safety

- New safe Cab with ROPS certification.
- The innovative cab provides unmatched protection for the operator against machine roll overs.
- Slip-resistant plates for better feet support.
- Large side and rear mirrors included to enhance safety.
- OPG top guard level 2 capable (optional).
- Rear view monitor system to easily check the rear of the machine (optional).

Large TFT LCD monitor

- Easy-to-see and use 7" large multi-function color monitor.
- Monitoring information can be displayed in 12 languages for global support.

TFT: Thin Film Transistor.

LCD: Liquid Crystal Display.



Horsepower

Gross: 180 hp (134 kW) @ 2,000 rpm
Net: 168 hp (125 kW) @ 2,000 rpm

Operating weight

24,850 - 25,400 kg

Bucket capacity

1.73 m³

Komtrax™ Revolutionary satellite monitoring system

Machines equipped with Komtrax send location, service meter, and operation maps to a safe internet network using wireless technology. Machine error codes, cautions, service items, fuel level, and more.

Large and comfortable cab for better operator environment

- Extremely low-noise cab, like a passenger car.
- Low vibration with cab damper mounting.
- Highly pressurized cab with air conditioner.
- Operator seat and console with armrest that provide cuttingedge ergonomics and enable operations in the appropriate operational posture.
 - Seat with integrated suspension.

Easy maintenance

- Long replacement interval of engine oil, engine oil filter, hydraulic oil, and hydraulic filter.
- Easy access to remotely mounted engine oil filter, and fuel drain valve.
- Side-by-side cooling concept enables individual cooling modules.
- EMMS monitoring system installed.
- Komtrax monitoring system installed as integral part of the hydraulic excavator.

High productivity and technological innovation in perfect harmony with the environment that differentiates Komatsu machines created for the XXI Century.



Pictures may include optional equipment.

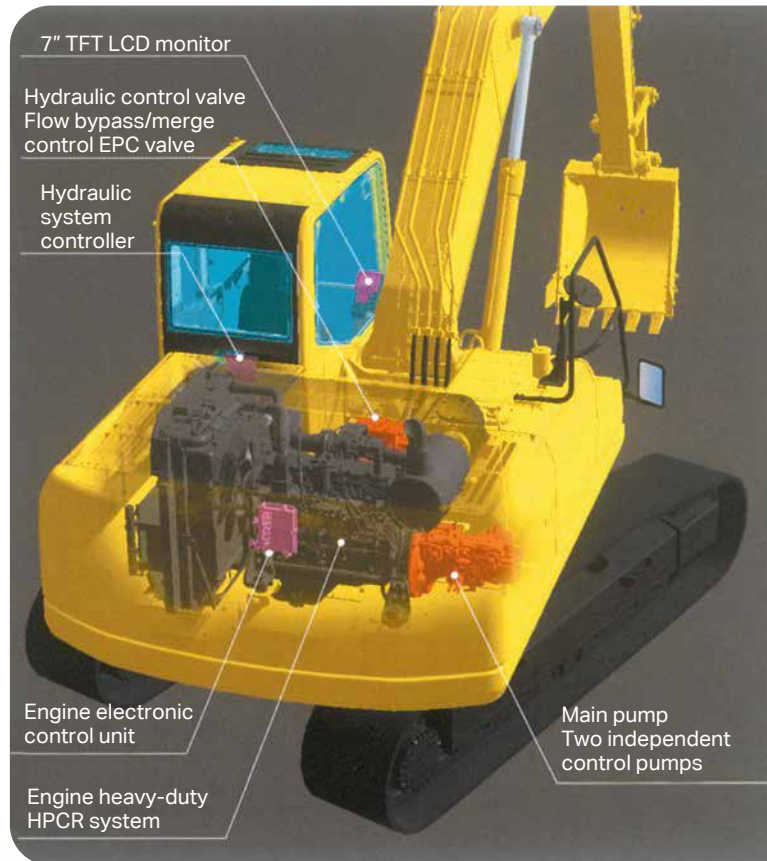
Productivity features



New "ecot3" Komatsu engines designed for optimum performance under the most severe conditions while complying with the latest environmental regulations. EPA Tier3 and EU Stage 3A (equivalent) emission certified engine - ecology & economy combined with Komatsu technology to create a high-performance without sacrificing power or productivity. Komatsu develops and produces all major components, such as engines, electronics, and hydraulic components, in house. With this "Komatsu Technology," and adding customer feedback, Komatsu is achieving great advancements in technology.

Low fuel consumption

The newly designed [ecot3] Komatsu SAA6D107E-1 engine reduces nitrogen oxide (NOx) particles significantly with electronically controlled precise multi-stage injection. The HPCR fuel injection system, specifically designed for construction machinery, improves engine total durability. With this excavator, hourly fuel consumption is considerably reduced using high efficiency techniques for engine-hydraulic unit connection and provides features that encourage energy-saving operations such as E-mode, Eco gauge, and extended idle caution. By incorporating these technologies, Komatsu has achieved a considerable reduction in fuel and energy consumption.



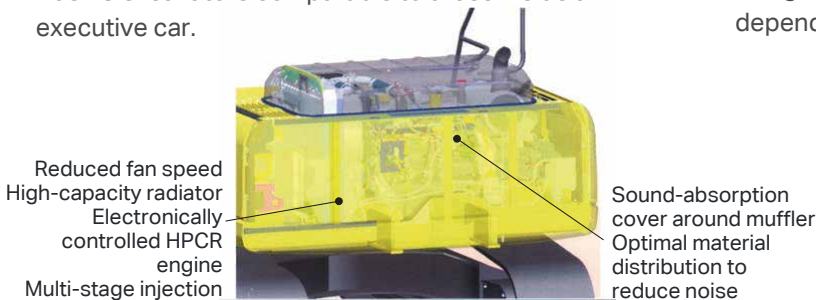


Low emission engine

The Komatsu SAA6D107E-1 (ecot 3) engine complies with EPA Tier3 and EU Stage 3A (equivalent) emission regulations.

Low operating noise

Komatsu Dash 8 crawler excavators feature the lowest in-class external noise levels and are especially well-suited for work in confined spaces or urban areas. Reduced fan speed, a large capacity radiator, and the optimal usage of sound insulation and of sound absorbing materials help to make noise levels inside Dash 8 excavators comparable to those inside an executive car.



Idle caution

To prevent unnecessary fuel consumption, an idling caution is displayed on the monitor if the engine idles for 5 minutes or more. Komatsu supports our customers in fuel economy.



E Prioritizes reduced fuel consumption (Economy mode)

P Prioritizes productivity (Power mode)

Selectable working modes available

Five working modes available, with optimum improvements in P and E mode:

P mode - Power or work priority mode has low fuel consumption, but fast working equipment speed, maximum production and power are maintained.

E mode - Economy or fuel priority mode further reduces fuel consumption –regardless of fuel brand– but maintains P mode-like working speed for light operations.

Can be selected Power or Economy modes anytime using a one-touch operation on the monitor panel depending on workload.

Eco-gauge assists energy-saving operations

The Eco-gauge can be seen on the right-hand side of the monitor. Working within the green range for environmentally friendly, energy-saving operations reduces CO₂ emissions and fuel consumption.



Operator environment

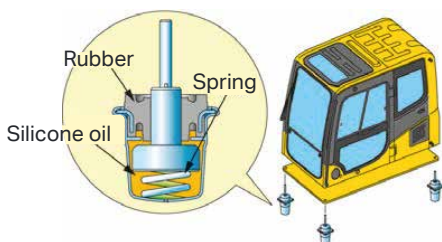


Low-noise design

The newly designed cab is highly rigid and has excellent sound absorption ability. Thorough improvement of the noise source reduction technology and the use of low-noise engine, hydraulic equipment and air conditioner mean this machine generates exceptionally low noise levels, similar to that of a passenger car.

Cab damper mounting

The built-in stability of the Komatsu PC240LC-8, combined with a highly rigid deck and a sprung multi-layer viscous mount system, drastically reduces vibration levels for the operator.



Wide, spacious cab

The newly designed, wide and spacious cab includes a suspension seat with a reclining backrest. The seat height and longitudinal inclination are easily adjusted with a pull-up lever. You can also set the operational posture of the armrest and the position of the console or recline the seat all the way and place it into a fully flat state with the headrest attached.



Pressurized cab

An automatic air conditioner, an air filter and a positive interval air pressure (60 Pa) combine to prevent external dust from entering the cab.

Automatic air conditioning

Cab inside temperature can be easily and accurately selected with the large LCD digital controls. Two-level control function improves airflow and maintains a comfortable operating environment during all seasons. Defrost function keeps the window clean.



New, large TFT monitor

EMMS (Equipment Management and Monitoring System)

To enable safe, accurate and smooth work, the user-friendly monitor is the highly intuitive user interface for the machine's Equipment Management and Monitoring System (EMMS). Multilingual and with all essential information available at a glance, it features simple and easy to operate switches and multifunction keys that provide the operator with fingertip access to a wide range of functions and operating information.

Large multi-lingual TFT monitor

A large user-friendly color monitor enables safe, accurate and smooth work. Screen visibility is improved through a TFT liquid crystal display that can be easily read at various angles and in various lighting conditions.

- Simple and easy-to-operate switches.
- Displays data in 12 languages to support operators around the world.

On-screen symbols

- 1 Auto deceleration
- 2 Working mode
- 3 Travel speed
- 4 Engine water temperature gauge
- 5 Hydraulic oil temperature gauge
- 6 Fuel level gauge
- 7 Eco-gauge
- 8 Function switch menu

Basic operation switches

- 1 Auto deceleration
- 2 Working mode selection
- 3 Travel speed selection
- 4 Buzzer cancelation
- 5 Window wiper
- 6 Window washer

Working mode selection

Power, economy, lifting, breaker, and attachment modes can be visualized on the color monitor.

Working mode	Application	Advantage
P	Power mode	<ul style="list-style-type: none"> • Maximum production/power • Fast cycle times
E	Economy mode	<ul style="list-style-type: none"> • Excellent fuel economy
B	Breaker mode	<ul style="list-style-type: none"> • Optimum engine RPM and hydraulic flow
L	Lifting mode	<ul style="list-style-type: none"> • Increased lifting power (hydraulic pressure has been increased by 7%)
ATT	Attachment mode	<ul style="list-style-type: none"> • Optimum engine RPM, hydraulic flow, 2-way

Lifting mode

When this mode is selected, the lifting capacity is increased by 7%.



EMMS (Equipment Management and Monitoring System)



Monitor function

The controller monitors engine oil level, coolant temperature, battery charge, and air filter clogging, etc. If the controller finds any abnormality, it is displayed on the LCD. The monitor stores abnormalities for more efficient troubleshooting.



Maintenance function

The monitor indicates when the replacement interval has been reached for the oil and filters.



Hydraulic pump oil flow adjustment

From the LCD monitor, you can automatically select the optimal hydraulic pump oil flow for breaking, and attachment operations in the B and ATT modes. In addition, the flow to the attachment is automatically reduced during simultaneous operation with other working equipment. This ensures smooth motion of all working equipment. Hydraulic pump oil flow adjustment for both attachment lines is now possible. (Optional attachment assembly has to be purchased).



Rearview camera for the working equipment (option)

The operator can access and view the rear of the machine on the large LCD color screen via images produced by a standard video camera.

Revolutionary machine management

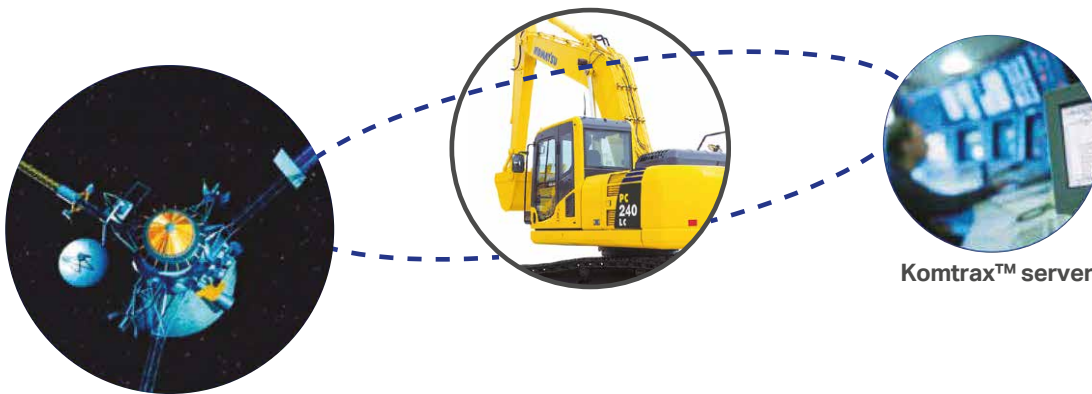
KOMTRAX

The remote Komatsu Tracking System, Komtrax™, for mining and construction machines provides a revolutionary new way to monitor your equipment, anytime, anywhere. It lets you pinpoint the precise location of your machines and obtain real-time machine data. Using GPS location and communication satellite technology, it is designed to be future proof and will meet your demands today and tomorrow.

Komtrax will help you to answer the three most important questions you have about your machine:

- Is the machine making money?
- Is the machine safe?
- Is the machine in good health?

For more details, please ask your distributor for a copy of the Komtrax brochure.



Komtrax™ server



Check machine location



Customer



Check service meter



Annual working hour record



Caution and periodic maintenance



Working record (fuel level, hours, etc.)

There are certain countries where Komtrax™ is not yet available, please contact your distributor when you want to activate the system. Komtrax will not operate if the satellite signal is blocked or obscured.

Complete safety

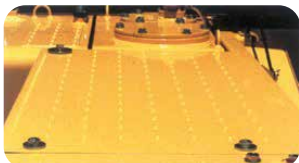
New Cab ROPS certified, and specifically developed for excavators

The cab is specifically designed for hydraulic excavators, and its tubular steel frame offers more strength. The framework provides high durability and impact resistance with remarkably high impact absorbency. The seat belt keeps the operator in the safety zone of the cab in the event of a rollover.



Anti-slip plates

Guards placed around high-temperature parts of the engine. The fan belt and pulleys are well protected.



Skylight

The hatch can be opened to improve overhead visibility.



Lock lever

It locks the hydraulic pressure to prevent unintentional movement when placed in the Lock position. Neutral start function only allows machine to be started in lock position.



Large side-view, rear, and sidewise mirrors

Enlarged left-side mirror and addition of rear and side mirror allow the PC240LC-8 to meet the new ISO visibility requirements, with a minimal surrounding visibility of 1 m.



Pump/engine room partition

The partition prevents hydraulic oil from spraying onto the engine to reduce the risk of fire.

Thermal and fan guards

Guards placed around high-temperature parts of the engine. The fan belt and pulleys are well protected.



Maintenance features

Side-by-side cooling

Since the radiator, aftercooler and oil cooler are arranged in parallel, it is easy to clean, remove and install them. The aluminum radiator, aftercooler and oil cooler provide high efficiency and are easy to recycle.



Fuel pre-filter with water separator

Removes any water and contaminants that have become mixed with the fuel, preventing fuel system damage (incorporated priming pump).



Washable floor

The PC240LC-8 floormat is easy to keep clean. The gently inclined surface has a flanged floormat and drainage holes to facilitate runoff.



Easy access to the engine oil filter and fuel drain valve

The engine oil filter and fuel drain valve are mounted remotely to improve accessibility.



Eco-Drain valve as standard

Engine oil replacement is easier and cleaner with a cutting-edge system that outperforms the competition.



Anti-rust, large capacity fuel tank

The large capacity, 400 L (106 US gal) fuel tank includes high resistance to corrosion with a 100% rust-proof treatment.

Inclined track frame

The track frame is inclined so that dirt and sand will not accumulate and can be removed easily.

Gas-assisted engine hood damper cylinders

The engine hood can be easily opened and closed with help of the gas-assisted engine hood damper cylinders.



Long-life oil and filters

Our machines are equipped with high-performance filters and lubricants developed by Komatsu. This innovative technology significantly reduces maintenance costs.



Hydraulic oil filter (environmentally friendly Eco-White concept)

Engine oil and oil filter	every 500 hours
Hydraulic oil	every 5000 hours
Hydraulic oil filter	every 1000 hours

Air conditioner filters

Fresh and recirculating air filters can be removed without tools for easy maintenance.



Specifications

Engine

Model	Komatsu SAA6D107E-1		
Type	Common rail direct injection, water-cooled, 4-cycle		
Aspiration	Turbocharged, after-cooled diesel		
N° of cylinders	6		
Bore	107 mm	4.2"	
Stroke	124 mm	4.9"	
Displacement	6.69 L	408 in ³	
Horsepower			
SAE J1995	Gross 134 kW / 180 hp		
ISO 9249/SAE J1349	Net 125 kW / 168 hp		
Rated speed	2,000 r. p. m.		
Fan drive method for radiator cooling	Mechanical		
Governor	All-speed control, electronic		

*EPA Tier 3 emissions certified

Hydraulics

Type	HydrauMind (Hydraulic Mechanical Intelligence) system, closed-center system with load sensing valves and pressure compensated valves		
Number of selectable working modes	5		
Main pump:			
Type	Variable displacement piston type		
Functions	Boom, arm, bucket, swing, and travel circuits		
Maximum flow	439 L/min	115.7 US gal/min	
Supply for control circuit	Self-reducing valve		
Hydraulic motors:			
Travel	2 x axial piston motors with parking brake		
Swing	1 x axial piston motor with swing holding brake		
Relief valve setting:			
Implement circuits	31.9 MPa	380 kg/cm ²	5,405 psi
Travel circuit	37.3 MPa	380 kg/cm ²	5,405 psi
Swing circuit	28.9 MPa	295 kg/cm ²	4,196 psi
Pilot circuit	3.2 MPa	33 kg/cm ²	469 psi
Hydraulic cylinders:			
(Number of cylinders - bore x stroke x rod diameter)			
Boom	2-130 mm x 1,335 mm x 90 mm	5.0" x 52.6" x 3.5"	
Arm	1-140 mm x 1,635 mm x 100 mm	5.5" x 64.3" x 3.9"	
Bucket			
2.5 m arm	1-130 mm x 1,020 mm x 90 mm	5.0" x 40.2" x 3.5"	
2.0 m arm	1-140 mm x 1,009 mm x 100 mm	5.5" x 39.7" x 3.9"	

Drives and brakes

Steering control	Two levers with pedals		
Drive method	Hydrostatic		
Maximum drawbar pull	178 kN	18,200 kg	40,124 lb
Gradeability	70% (35°)		
Maximum travel speed:			
	High	5.5 km/h	3.4 mph
	Mid	4.1 km/h	2.5 mph
	Low	2.9 km/h	1.8 mph
Service brake	Hydraulic lock		
Parking brake	Mechanical disc brake		

Swing system

Drive method	Hydrostatic
Swing reduction	Planetary gear
Swing circle lubrication	Grease-bathed
Service brake	Hydraulic lock
Holding brake/Swing lock	Mechanical disc brake
Swing speed	11.7 rpm
Swing torque	7,852 kgf m

Undercarriage

Center frame	X-frame
Track frame	Box-section
Type of track	Sealed track
Track adjuster	Hydraulic
Number of shoes	51 (each side)
Number of carrier rollers	2 (each side)
Number of track rollers	10 (each side)

Refilling capacity

Fuel tank	400 L	105.7 U.S. gal
Coolant	19.8 L	5.2 U.S. gal
Engine	23.1 L	6.1 U.S. gal
Final drive, each side	5.2 L	1.3 U.S. gal
Swing drive	6.6 L	1.6 U.S. gal
Hydraulic tank	135 L	35.5 U.S. gal

Operating weight (approximate)

Operating weight includes 5,850 mm 19'2" sturdy one-piece boom, 2,500 mm 8'2" arm, SAE heaped 1.20 m³ 1.6 yd³ bucket, rated capacity of lubricants, coolant, full fuel tank, operator, and standard equipment.

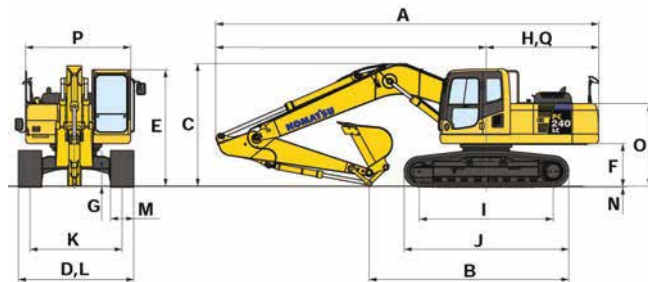
Shoe size	Operating weight	Ground pressure
600 mm	24,850 kg	0.50 kg/cm ²
700 mm	25,130 kg	0.44 kg/cm ²
800 mm	25,400 kg	0.39 kg/cm ²

Bucket and arm force

		Arm	2 m 6'07"	2.5 m 8'02"	3 m 9'10"
SAE	Bucket digging force at maximum power	17,900 kg 176 kN	15,500 kg 152 kN	15,500 kg 152 kN	
	Arm crowd force at maximum power	15,800 kg 155 kN	14,500 kg 142 kN	12,100 kg 119 kN	
ISO	Bucket digging force at maximum power	20,100 kg 197 kN	17,500 kg 172 kN	17,500 kg 172 kN	
	Arm crowd force at maximum power	16,400 kg 161 kN	15,100 kg 148 kN	13,200 kg 129 kN	

Dimensions

	2.0 m	2.5 m	2.0 m
Arm length	2.0 m	2.5 m	2.0 m
A Overall length	9,865 mm	9,960 mm	9,885 mm
B Length on ground (transport)	6,660 mm	6,115 mm	5,390 mm
C Overall height (to top of boom)	3,220 mm	3,295 mm	3,185 mm
D Overall width (swing structure)	3,380 mm		
E Overall height (to top of cab)	3,055 mm		
F Ground clearance, counterweight	1,100 mm		
G Ground clearance, maximum	440 mm		
H Tail swing radius	2,940 mm		
I Track length on ground	3,845 mm		
J Track length	4,640 mm		
K Track gauge	2,580 mm		
L Width of crawler	3,380 mm		
M Shoe width	800 mm		
N Grouser height	26 mm		
O Machine height to top of cab	2,110 mm		
P Swing structure width	2,710 mm		
Q Distance, swing center to rear end	2,905 mm		

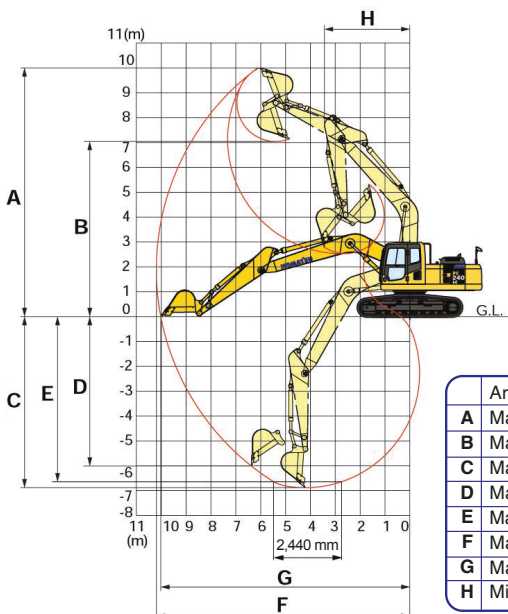


Bucket, arm and boom combination

Bucket capacity (heaped)	Width		Weight with side cutters	N° of teeth	Arm length		
	Without side cutters	With side cutters			2.0 m	2.5 m	3.0 m
0.72 m ³	900 mm	1,005 mm	658 kg	3	○	○	○
1.00 m ³	1,155 mm	1,260 mm	734 kg	4	○	○	○
1.58 m ³	1,400 mm	1,505 mm	1,125 kg	5	○	○	□
1.73 m ³	1,530 mm	1,635 mm	1,330 kg	6	○	□	×

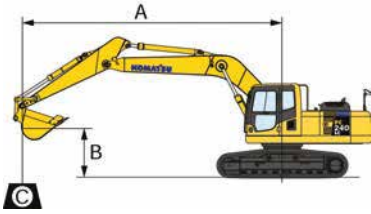
- For general use, up to 1.8 ton/m³ density 1.52 US ton/yd³
- For general use, up to 1.5 ton/m³ density 1.26 US ton/yd³
- × - Not in use

Working range



Arm	2.0 m	6'7"	2.5 m	8'2"	3.0 m	9'10"
A Max. digging height	9,590 mm	31'5"	9,845 mm	32'3"	10,060 mm	33'0"
B Max. dumping height	6,550 mm	21'5"	6,850 mm	22'6"	7,010 mm	23'0"
C Max. digging depth	5,875 mm	19'3"	6,340 mm	20'9"	6,915 mm	22'8"
D Max. vertical digging depth	4,490 mm	14'8"	5,025 mm	16'6"	5,485 mm	18'0"
E Max. digging depth with 2,440 mm 8' flat end	5,710 mm	18'9"	6,120 mm	20'1"	6,780 mm	22'3"
F Max. digging reach	9,270 mm	30'5"	9,685 mm	31'9"	10,180 mm	33'5"
G Max. digging reach at ground level	9,200 mm	30'2"	9,500 mm	31'2"	10,125 mm	33'2"
H Min. swing radius	3,555 mm	11'8"	3,350 mm	11'0"	3,450 mm	11'4"

Lifting capacity



- A: Reach from swing center
- B: Bucket hook height
- C: Lifting capacity
- Cf: Rating over front
- Cs: Rating over side
- ☉ Rating at maximum reach

- Conditions:
- Boom length: **5,850 mm**
 - SAE bucket heaped: **1.01 m³**
 - Bucket weight: **730 mm**
 - Lifting mode: **LIG**

PC240LC-8		Arm: 3.0 m		Shoe: 700 mm		Unit: kg							
B	A	1.5 m		3.0 m		4.5 m		6.0 m		7.5 m		☉ Maximum reach	
		Cf	Cs	Cf	Cs	Cf	Cs	Cf	Cs	Cf	Cs	Cf	Cs
6.0 m								*4,900	*4,900	*4,450	4,250	*3,000	*3,000
4.5 m								*5,800	*5,800	*5,550	4,200	*3,050	*3,050
3.0 m				*14,450	*14,450	*9,050	*9,050	*7,150	5,900	*6,250	4,050	*3,200	2,950
1.5 m				*6,900	*6,900	*11,700	8,650	*8,550	5,550	6,050	3,850	*3,550	2,850
0 m				*8,100	*8,100	*13,500	8,150	8,450	5,250	5,900	3,700	*4,050	2,900
-1.5 m		*7,350	*7,350	*11,650	*11,650	13,550	8,000	8,300	5,150	5,800	3,650	*4,950	3,100
-3.0 m		*11,350	*11,350	*16,750	*16,350	13,600	8,000	8,250	5,100			5,850	3,700
-4.5 m				*18,350	*16,850	*12,650	8,200	8,450	5,300			7,950	5,000

PC240LC-8		Arm: 2.5 m		Shoe: 700 mm		Unit: kg							
B	A	1.5 m		3.0 m		4.5 m		6.0 m		7.5 m		☉ Maximum reach	
		Cf	Cs	Cf	Cs	Cf	Cs	Cf	Cs	Cf	Cs	Cf	Cs
6.0 m								*5,650	*5,650			*4,750	4,400
4.5 m						*7,500	*7,500	*6,500	6,100	*6,100	4,150	*4,850	3,650
3.0 m						*10,150	9,100	*7,750	5,800	6,200	4,000	5,150	3,300
1.5 m						*12,550	8,450	8,650	5,450	6,000	3,850	5,000	3,200
0 m						13,700	8,100	8,400	5,250	5,900	3,750	5,150	3,250
-1.5 m		*8,550	*8,550	*13,000	*13,000	13,600	8,000	8,300	5,150	5,850	3,700	5,650	3,550
-3.0 m		*13,900	*13,900	*19,850	*16,550	*13,700	8,100	8,350	5,200			6,850	4,350
-4.5 m				*16,750	*16,750	*11,700	8,400					*9,550	6,400

PC240LC-8		Arm: 2.0 m		Shoe: 700 mm		Unit: kg							
B	A	1.5 m		3.0 m		4.5 m		6.0 m		7.5 m		☉ Maximum reach	
		Cf	Cs	Cf	Cs	Cf	Cs	Cf	Cs	Cf	Cs	Cf	Cs
6.0 m								*6,300	6,200			*4,850	4,800
4.5 m				*12,000	*12,000	*8,400	*8,400	*7,100	6,000	*5,600	4,050	*4,950	3,950
3.0 m						*11,050	8,850	*8,250	5,700	6,100	3,950	*5,250	3,550
1.5 m						*13,200	8,250	8,550	5,400	5,950	3,800	5,350	3,400
0 m						13,600	8,000	8,350	5,200	5,900	3,700	5,550	3,500
-1.5 m				*13,550	*13,550	13,600	8,000	8,300	5,150			6,200	3,900
-3.0 m				*18,650	16,750	*13,200	8,150	8,450	5,250			7,800	4,900
-4.5 m						*10,450	8,550					*9,750	7,850

*Load is limited by hydraulic capacity rather than tipping. Capacities are based on ISO10567. Rated loads do not exceed 87% of hydraulic lift capacity or 75% of tipping load.

Standard equipment

- Air filter, double element dry type
- Alternator, 35 A, 24 V
- AM/FM radio
- Anti-slip plates
- Arm, 2.5 m
- Armrest console
- Auto-deceleration
- Automatic air bleed down system in fuel line
- Automatic air conditioner with defogger
- Automatic engine warm-up system
- Backup alarm
- Batteries, standard
- Boom holding valve
- Boom, 5.85 m
- Bucket, 1.73 m³
- Cab heating and defroster
- Counterweight
- Electric horn
- EMMS monitoring system
- Engine overheating prevention system
- Fan guard structure
- Hydraulic track adjusters (each side)
- Komatsu SAA6D107E-1 engine
- Komtrax
- Multi-function color monitor
- OPG, level 2 cab (option)
- Power maximizing system
- PPC hydraulic control system
- Radiator and oil cooler dustproof net
- Rear reflector
- Rearview mirrors (3)
- ROPS cab
- Seat belt, retractable, 78 mm
- Shoes, triple grouser, 600 mm
- Starter motor, 4.5 kW
- Suction fan
- Suspension seat
- Thermal and fan guards
- Track frame cover, center section
- Track rollers, 10 each side
- Working lights, 2 (boom, RH, and 2 in cab)
- Working mode selection system

Optional equipment

- Rearview camera
- Revolving frame guard
- Service valve (1 additional)
- Triple grouser shoe, 800 mm

Los diseños, las especificaciones y la información de los productos en este documento se entregan solo para propósitos informativos y no constituyen garantías de ningún tipo. Los diseños y las especificaciones de los productos pueden cambiar en cualquier momento sin previo aviso. Las únicas garantías que se aplican a la venta de productos y servicios son las garantías escritas estándar de Komatsu, que se proporcionarán previa solicitud.

Komatsu y otras marcas registradas utilizadas en este documento son propiedad de Komatsu Ltd., Komatsu América Corp., Komatsu Mining Corp. o una de sus filiales, o los respectivos dueños o concesionarios.

KOMATSU

www.komatsulatioamerica.com

